

CONTEMPORARY VILLAS

VILLA 5 |

Bedrooms	3
Bathrooms	3
Parking	2 cars

Built Area	130,41sqm
Covered Terraces	21,34 sqm
Uncovered Terraces	56,28 sqm
Pool Area	21,63 sqm
Parking Area	26,55 sqm

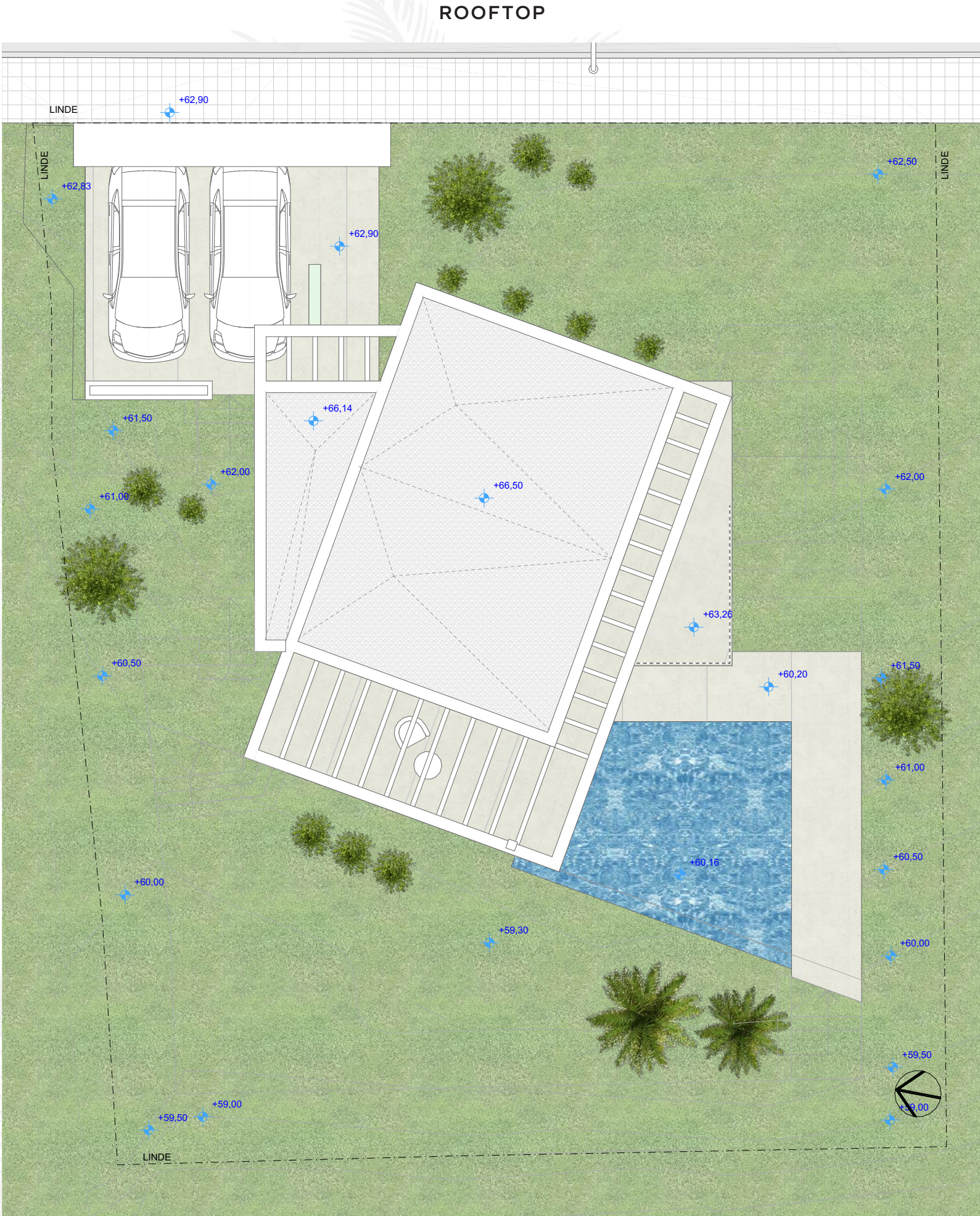
Total Area	151,75 sqm
Total Garden Area	247,82 sqm
Plot Surface	411,00 sqm

*All the surfaces detailed in this floor plan correspond to built areas.

The floor plan is not final as it has been designed in accordance with the Building Execution Project and, consequently, KORK S.L. reserves the right to include whatever changes due to technical and/or legal imperatives required by any public Administration or Agency. These changes, in any case, will be in accordance with the progress of the construction work. The accessory elements (for example, including the kitchen) are merely for illustrative purposes. The rotation sense of doors and the distribution of sanitary fittings are not binding. The surface areas shown are approximate and, may be altered for technical and/or legal reasons in the course of the construction work.

DEVELOPED COMMERCIALIZED

ARCHITECTURE



VILLA 5 |

Bedrooms	3
Bathrooms	3
Parking	2 cars

Built Area	130,41sqm
Covered Terraces	21,34 sqm
Uncovered Terraces	56,28 sqm
Pool Area	21,63 sqm
Parking Area	26,55 sqm

Total Area	151,75 sqm
Total Garden Area	247,82 sqm
Plot Surface	411,00 sqm

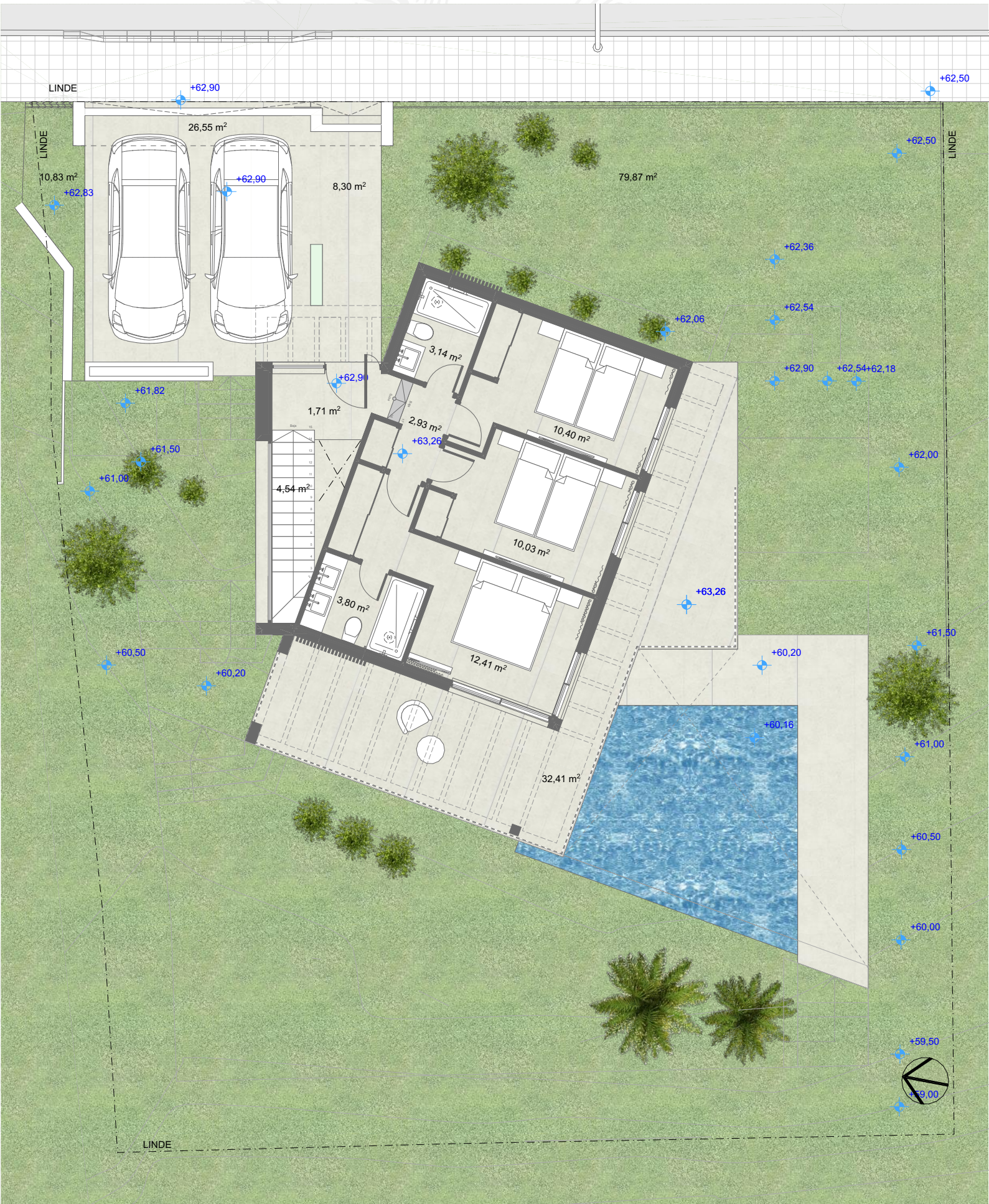
*All the surfaces detailed in this floor plan correspond to built areas.

The floor plan is not final as it has been designed in accordance with the Building Execution Project and, consequently, KORK S.L. reserves the right to include whatever changes due to technical and/or legal imperatives required by any public Administration or Agency. These changes, in any case, will be in accordance with the progress of the construction work. The accessory elements (for example, including the kitchen) are merely for illustrative purposes. The rotation sense of doors and the distribution of sanitary fittings are not binding. The surface areas shown are approximate and, may be altered for technical and/or legal reasons in the course of the construction work.

DEVELOPED COMMERCIALIZED

ARCHITECTURE

FIRST FLOOR



VILLA 5 |

Bedrooms	3
Bathrooms	3
Parking	2 cars

Built Area	130,41sqm
Covered Terraces	21,34 sqm
Uncovered Terraces	56,28 sqm
Pool Area	21,63 sqm
Parking Area	26,55 sqm

Total Area	151,75 sqm
Total Garden Area	247,82 sqm
Plot Surface	411,00 sqm

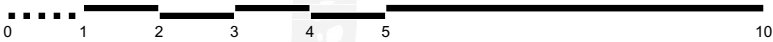
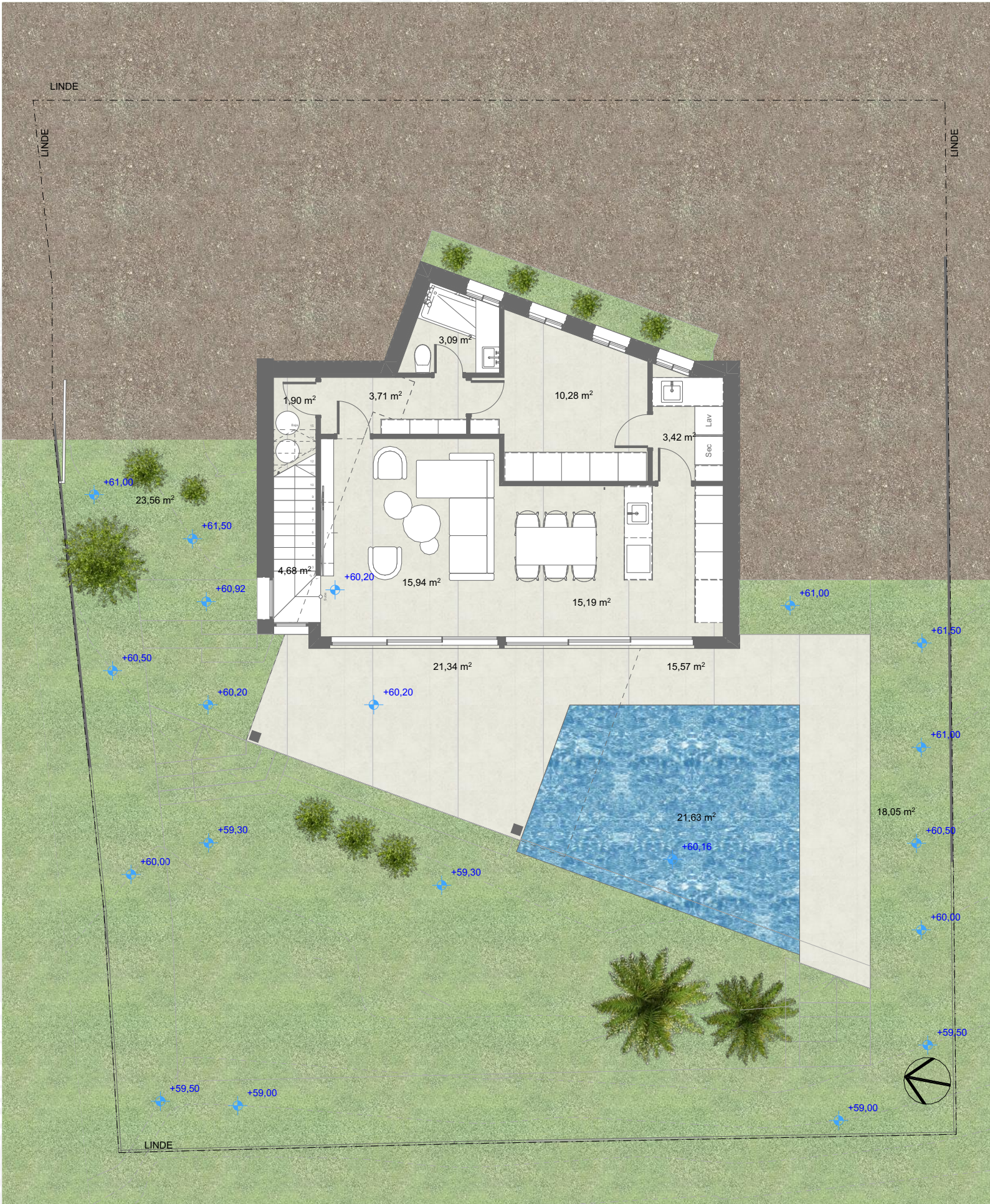
*All the surfaces detailed in this floor plan correspond to built areas.

The floor plan is not final as it has been designed in accordance with the Building Execution Project and, consequently, KORK S.L. reserves the right to include whatever changes due to technical and/or legal imperatives required by any public Administration or Agency. These changes, in any case, will be in accordance with the progress of the construction work. The accessory elements (for example, including the kitchen) are merely for illustrative purposes. The rotation sense of doors and the distribution of sanitary fittings are not binding. The surface areas shown are approximate and, may be altered for technical and/or legal reasons in the course of the construction work.

DEVELOPED COMMERCIALIZED

ARCHITECTURE

GROUND FLOOR



VILLA 5 |

Bedrooms	3
Bathrooms	3
Parking	2 cars

Built Area	130,41sqm
Covered Terraces	21,34 sqm
Uncovered Terraces	56,28 sqm
Pool Area	21,63 sqm
Parking Area	26,55 sqm

Total Area	151,75 sqm
Total Garden Area	247,82 sqm
Plot Surface	411,00 sqm

*All the surfaces detailed in this floor plan correspond to built areas.

The floor plan is not final as it has been designed in accordance with the Building Execution Project and, consequently, KORK S.L. reserves the right to include whatever changes due to technical and/or legal imperatives required by any public Administration or Agency. These changes, in any case, will be in accordance with the progress of the construction work. The accessory elements (for example, including the kitchen) are merely for illustrative purposes. The rotation sense of doors and the distribution of sanitary fittings are not binding. The surface areas shown are approximate and, may be altered for technical and/or legal reasons in the course of the construction work.

DEVELOPED COMMERCIALIZED

BASEMENT

