

APARTMENT 3.2.A

4 BEDROOMS - 2 PARKINGS - 1 STORAGE

Usable Area

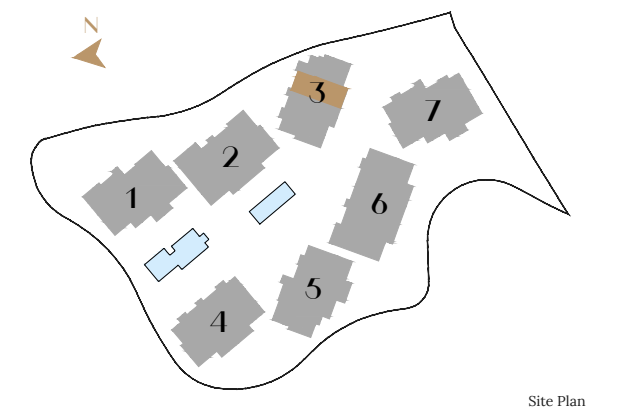
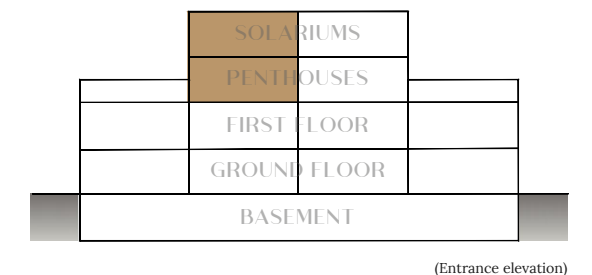
Indoor Area	182,59 m ²
Covered Terrace	44,61 m ²
Uncovered Terrace	21,37 m ²
TOTAL USABLE AREA (Indoor+Terrace)	248,57 m²

Solarium	96,65 m ²
----------	----------------------

Constructed Area

Indoor Area	217,66 m ²
Covered Terrace	48,39 m ²
Uncovered Terrace	24,06 m ²
TOTAL BUILT AREA (Indoor+Terrace)	290,11 m²

Solarium	107,70 m ²
----------	-----------------------



*All the surfaces detailed in this floor plan correspond to built areas.

The floor plan above is not final as it has been designed in accordance with the Building Execution Project and, consequently, THE VIEW CHASE DEVELOPMENT I S.L. Reserves the right to include whatever changes due to the technical and/or legal imperatives required by any public Administration or Agency. These changes, in any case, will be in accordance with the progress of the construction work. The accessory elements (for example, including the kitchen) are merely for illustrative purposes. The rotation sense of doors and the distribution of sanitary fittings are not binding. The surface areas shown are approximate and, may be altered for technical and/or legal reasons in the course of the construction work.

APARTMENT 3.2.A

4 BEDROOMS - 2 PARKINGS - 1 STORAGE

Usable Area

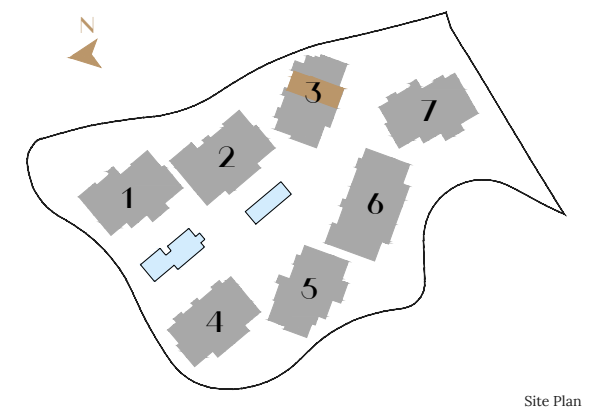
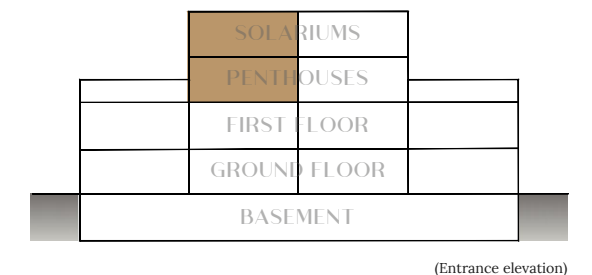
Indoor Area	182,59 m ²
Covered Terrace	44,61 m ²
Uncovered Terrace	21,37 m ²
TOTAL USABLE AREA (Indoor+Terrace)	248,57 m²

Solarium	96,65 m ²
----------	----------------------

Constructed Area

Indoor Area	217,66 m ²
Covered Terrace	48,39 m ²
Uncovered Terrace	24,06 m ²
TOTAL BUILT AREA (Indoor+Terrace)	290,11 m²

Solarium	107,70 m ²
----------	-----------------------



*All the surfaces detailed in this floor plan correspond to built areas.

The floor plan above is not final as it has been designed in accordance with the Building Execution Project and, consequently, THE VIEW CHASE DEVELOPMENT I S.L. Reserves the right to include whatever changes due to the technical and/or legal imperatives required by any public Administration or Agency. These changes, in any case, will be in accordance with the progress of the construction work. The accessory elements (for example, including the kitchen) are merely for illustrative purposes. The rotation sense of doors and the distribution of sanitary fittings are not binding. The surface areas shown are approximate and, may be altered for technical and/or legal reasons in the course of the construction work.

