



M A R B E L L A

Villa 25

Tipology C

Bedrooms
6

Bathrooms
6+2

Orientation
S/E

PRICE ON REQUEST



M A R B E L L A

VILLA 25

PLOT	1.673,54 m ²
------	-------------------------

BUILT AREA

Living Area	727,91 m ²
-------------	-----------------------

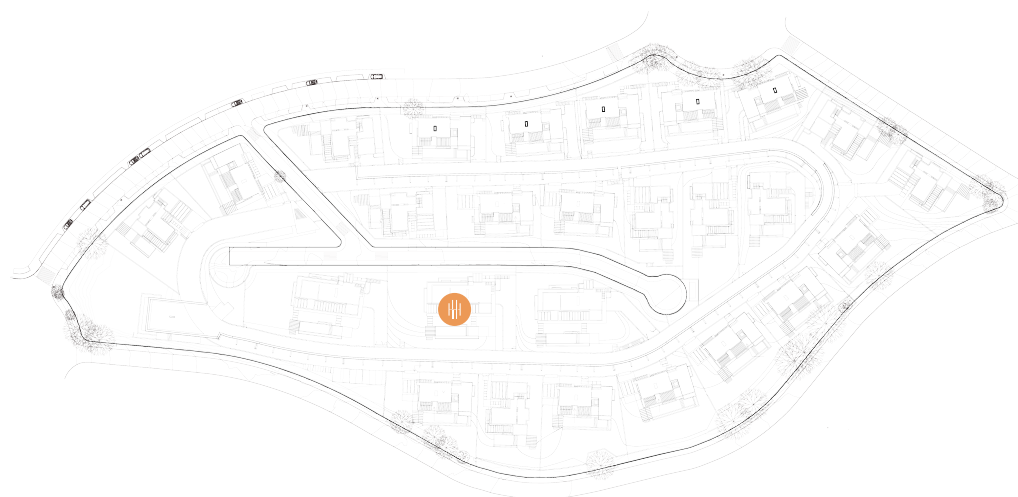
Terrace Area	223,25 m ²
--------------	-----------------------

TOTAL BUILT AREA	951,16 m²
-------------------------	-----------------------------

ACCORDING TO DECRETO 218/2005

Useful Area	607,86 m ²
-------------	-----------------------

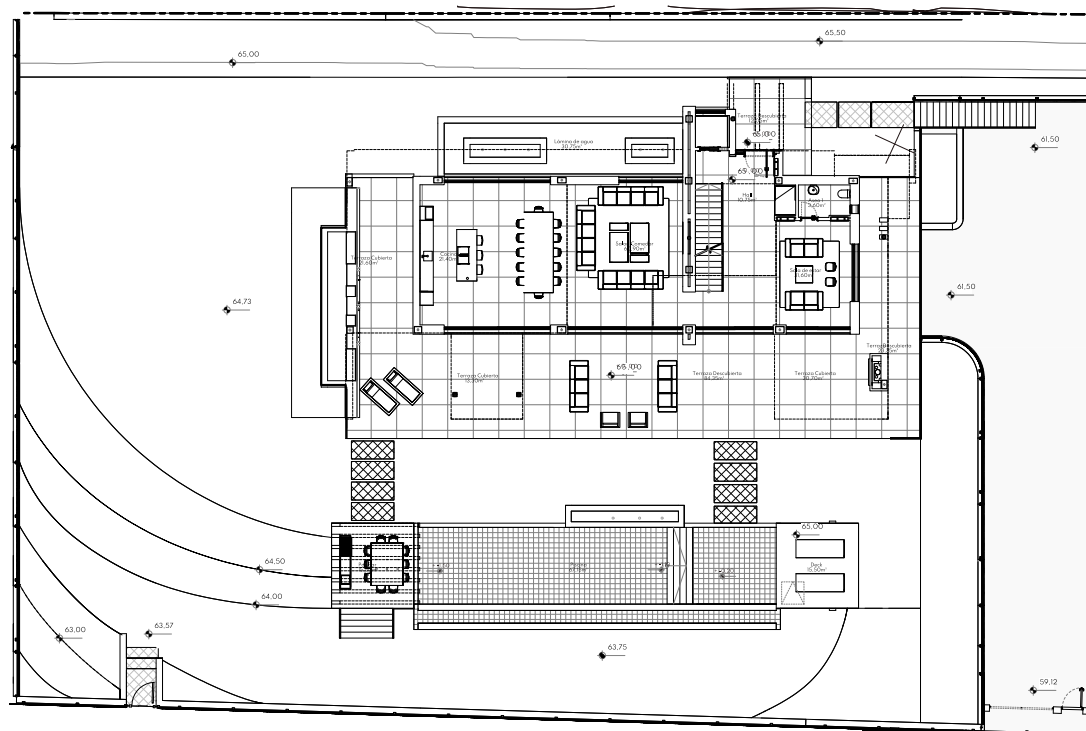
Built Area	783,17 m ²
------------	-----------------------



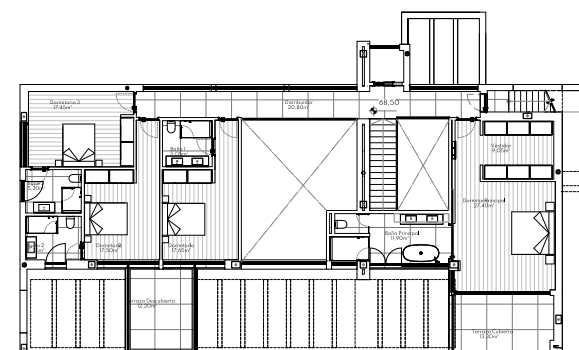
This plan may be modified depending on progress of the development. The furniture shown is purely for decorative purposes. The project manager reserves the right to make the necessary changes for any possible functional, aesthetic and legal reasons, without this negatively affecting the quality of the construction. Illustrative dimensions.



M A R B E L L A



MAIN LEVEL



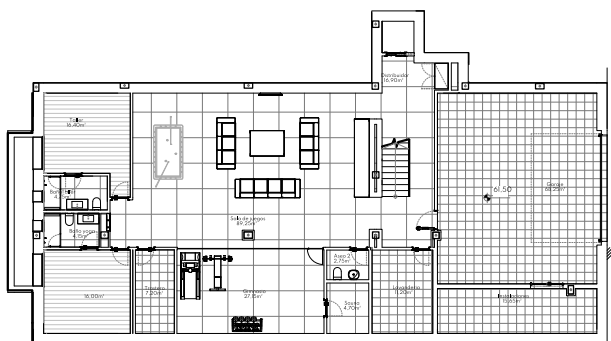
UPPER LEVEL



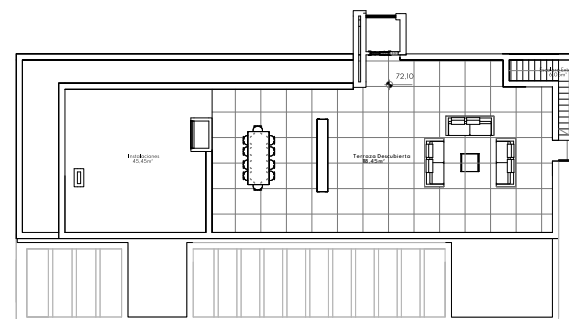
This plan may be modified depending on progress of the development. The furniture shown is purely for decorative purposes. The project manager reserves the right to make the necessary changes for any possible functional, aesthetic and legal reasons, without this negatively affecting the quality of the construction. Illustrative dimensions.



M A R B E L L A



LOWER LEVEL



SOLARIUM



This plan may be modified depending on progress of the development. The furniture shown is purely for decorative purposes. The project manager reserves the right to make the necessary changes for any possible functional, aesthetic and legal reasons, without this negatively affecting the quality of the construction. Illustrative dimensions.