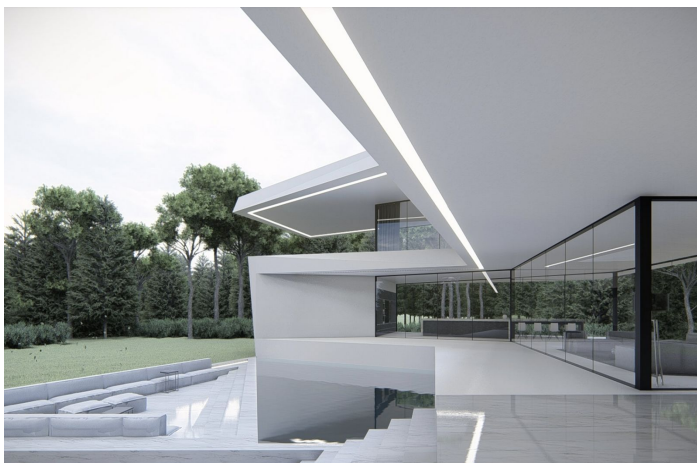
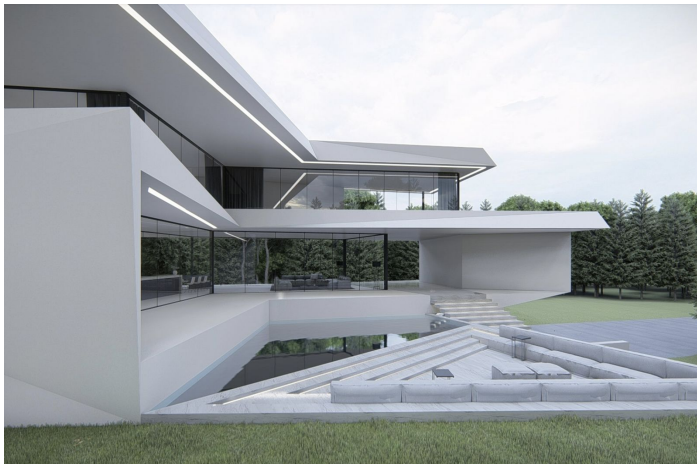




Detached Villa for sale in Benahavís, Benahavís

4.995.000 €

Reference: R4629586 Bedrooms: 7 Bathrooms: 9 Plot Size: 5.000m² Build Size: 870m² Terrace: 560m²





Costa del Sol, Benahavís

OFF PLAN – CONTEMPORARY ECOLOGICAL VILLA IN LA QUINTA, BENAHAIVIS IN URB. LOS ALMENDROS with panoramic views and views and on 6,5 km from the beach. The ground floor: entrance hall with lift, guest toilet, technical installations room, spacious living/dining room with large open plan fully fitted kitchen with Bosch appliances and separate pantry, furthermore there is on this floor a separate bedroom/study with en-suite bathroom, large, covered terraces overlooking the large 51,50 m2 heated swimming pool. On the first floor: lift, landing, master bedroom with master bathroom and large dressing room and of course a huge private terrace. A hallway leads you to another 3 bedrooms with 3 bathrooms wherefrom 1 ensuite and a terrace accessible for all 3 bedrooms. In the semi-basement, you have a huge carport with stairs with a path that leads you to the main entrance. Furthermore, the lift takes you to this floor where you find another bedroom with a bathroom ensuite, a separate apartment/bedroom and a games room. There is a completely separate flat which has a living/fitted kitchen/bedroom area, a dressing room and an ensuite bathroom. The separate flat is accessible from the garage but could also be accessed from the lift area. Construction time approx. 12 to 14 months after licenses. Pictures of bathrooms and kitchens are just examples of what they could look like, final choice will be that of the clients. Example of some of the specifications, - Interior and exterior floor tiles from GRESPANIA 600x600 - 800x800 - 1200x1200 (Color and size to choose) - Bathroom walls with COVERLAM plates (GRESPANIA) 2700X1200 (Color to choose) - Bathrooms from ROCA – VILLEROY BOCH – DURAVIT or similar - Aerothermia/airconditioning - Elevator from Schindler or similar - Underfloor heating in the full villa - Ceiling high windows with a sunken track, 5+5/chamber/6+6 - Ceiling high and 1-meter wide HPL interior doors, 30dB - Ceiling high pivot entrance door and 1,50 wide - Fully fitted kitchen with aluminum frame doors and covered with COVERLAM (Color to choose) - Island with COVERLAM 3600X1600 no visible joints (Colour to choose) - White goods from Bosch – AEG or MIELE - Heated pool with automatic cover - 20 solar panels - 3 lithium batteries of each 10kW - Car charger - Domotica We are a construction company, Key-in-Hand, that can design and construct any possibility you can think of. If you do not see a design of us that you like we design a totally new villa for you according to your ideas and input. Although we prefer to construct ecological building, we can construct from traditional construction to ecological constructions it all depends on you.



Features:

Caratteristiche

Terrazza coperta
Ascensore
Terrazza privata
Ripostiglio
Bagno privato
Doppio vetro
Armadi a muro
Wifi
Campo da tennis
Appartamento ospiti
Pensione
Ripostiglio
Jacuzzi
Barbecue
Domotica
Seminterrato
Fibra ottica

Accesso per le persone con mobilità ridotta

Viste

Montagna
Panoramica
Campagna
Giardino
Piscina
Città
Strada

Piscina

Riscaldata
Privata

Giardino

Privato
Di facile manutenzione

Utility

Elettricità
Acqua potabile
Telefono
Pannelli solari
Pannelli fotovoltaici

Orientamento

Est
Ovest
Sud -est
Sud -ovest

Collocamento

Vicino al golf
Zona urbana
Vicino ai negozi
Vicino alla città
Vicino alle scuole

Mobilia

Opzionale

Sicurezza

Sistema di allarme
Citofono
Cassaforte

Categoria

Case di vacanza
Investimento
Golf
Lusso
Sulla Carta
Contemporary

Climate Control

Aria condizionata
Freddo a/c
Caldo a/c
Camino
Riscaldamento a pavimento
Riscaldamento a pavimento nei bagni

Condizione

Nuove costruzioni

Cucina

Completamente arredata

Parcheggio

Sotterraneo
Garage
Privato
Coperto
Libero
Più di uno

