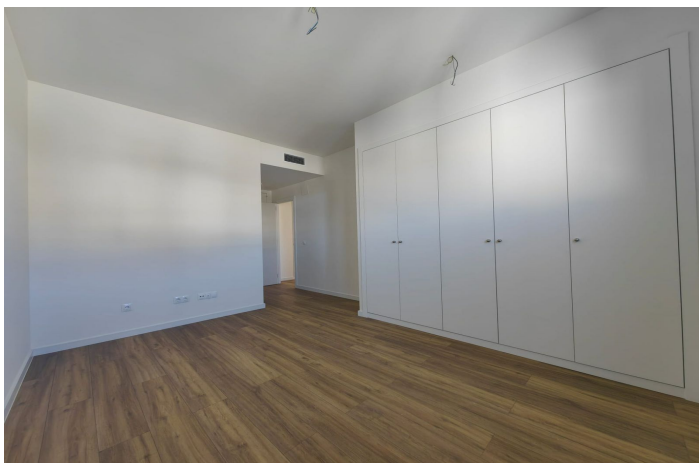




Penthouse for sale in Estepona, Estepona

545.000 €**Reference: R5295277 Bedrooms: 2 Bathrooms: 2 Build Size: 120m² Terrace: 35m²**



Costa del Sol, Estepona

Brand New South-Facing Penthouse with Panoramic Sea & Mountain Views – Habitat Valle Romano Discover this stunning, brand new penthouse located in the contemporary development of Habitat Valle Romano, set within the prestigious Valle Romano Golf Estate. Designed for modern Mediterranean living, this spacious property offers an exceptional blend of comfort, style, and lifestyle amenities. The penthouse features two generous bedrooms and two bathrooms, including a master suite with en-suite bathroom, finished to a high standard throughout. The bright open-plan kitchen, dining, and living area flows seamlessly onto an impressive south-facing L-shaped terrace, ideal for outdoor dining, entertaining, or simply relaxing while enjoying panoramic views of the Costa del Sol coastline, surrounding mountains, and the Mediterranean Sea. Residents benefit from a secure and private environment, with underground parking and a storage room included. The development offers outstanding communal facilities, including a large outdoor swimming pool, fully equipped gym, communal work and entertainment space with a fitted kitchen, outdoor fitness circuit with exercise machines, chill-out areas, and a pétanque court—all designed to enhance everyday living. Valle Romano enjoys a privileged location, just 10 minutes by car from Estepona Old Town, the marina, beaches, and all local amenities, while being surrounded by nature and golf. This penthouse is ideal as a family holiday home, a full-time residence, or a high-potential investment property in one of Estepona's most up-and-coming areas



Features:

Caratteristiche

Ascensore
Terrazza privata
Ripostiglio
Bagno privato
Doppio vetro
Armadi a muro
Palestra
Seminterrato
Fibra ottica
Accesso per le persone con mobilità ridotta

Viste

Mare
Montagna
Panoramica
Campagna
Giardino
Golf

Piscina

Condominiale
Piscina per bambini

Giardino

Condominiale
Paesaggistico
Di facile manutenzione

Utility

Elettricità
Acqua potabile

Orientamento

Sud

Collocamento

Vicino al porto
Zona urbana
Vicino al mare
Vicino ai negozi
Vicino alla città
Vicino alle scuole

Mobilia

Non arredato

Sicurezza

Complesso residenziale privato
Citofono

Categoria

Case di vacanza
Investimento
Golf
Lusso
Rivendita
Contemporary

Climate Control

Aria condizionata
Freddo a/c

Condizione

Eccellente
Nuove costruzioni

Cucina

Completamente attrezzata

Parcheggio

Sotterraneo
Privato