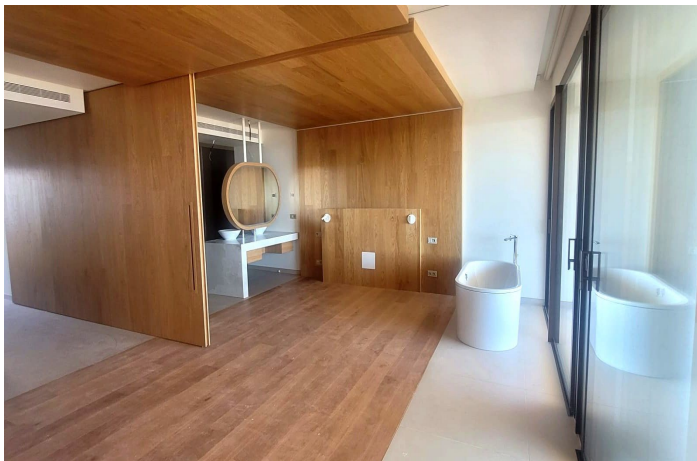




Middle Floor Apartment for sale in Fuengirola, Fuengirola

799,000 €

Reference: R5283223 Bedrooms: 2 Bathrooms: 2 Build Size: 117m² Terrace: 28m²





Costa del Sol, Fuengirola

Brand new property in a modern residential complex! This elegant apartment on the fourth floor of South Residences – Leiro combines contemporary design, comfort, and a prime location between the sea and the mountains. With a total surface area of 117 m², the property offers a smart layout featuring a bright living-dining room with an open-plan kitchen, two spacious bedrooms with built-in wardrobes, two full bathrooms, and a generous private terrace with partial sea views and stunning natural surroundings. Large sliding doors seamlessly connect the interior with the exterior, bringing abundant natural light throughout the day and creating a wonderful sense of space. High-quality finishes such as porcelain flooring, designer carpentry, and sustainable materials like natural stone and wood add both sophistication and warmth. The price includes an underground parking space and a private storage room, providing extra convenience and storage capacity. As an owner, you'll enjoy exclusive access to the residential amenities: swimming pools for adults and children, outdoor gym, pedestrian paths, coworking area, open-air cinema, pet park, and barbecue and picnic spaces. You'll also benefit from privileged access to the services of the prestigious Higuera Hotel Curio Collection, including spa, restaurants, beach club, and concierge service. The location is unbeatable: less than 5 minutes from the beach and natural areas, and only 15 minutes by car from Málaga International Airport. An ideal choice as a permanent residence.



Features:

Features

Covered Terrace
Lift
Near Transport
Private Terrace
Ensuite Bathroom
Double Glazing
Fitted Wardrobes
Solarium
Gym
Sauna
Paddle Tennis
Wood Flooring
Jacuzzi

Setting

Close To Port
Close To Sea
Close To Shops
Close To Town
Close To Schools

Furniture

Part Furnished

Parking

Communal

Orientation

South East

Condition

New Construction

Garden

Communal

Utilities

Drinkable Water

Views

Sea
Panoramic
Garden
Pool

Pool

Communal

Security

Gated Complex
24 Hour Security
Entry Phone