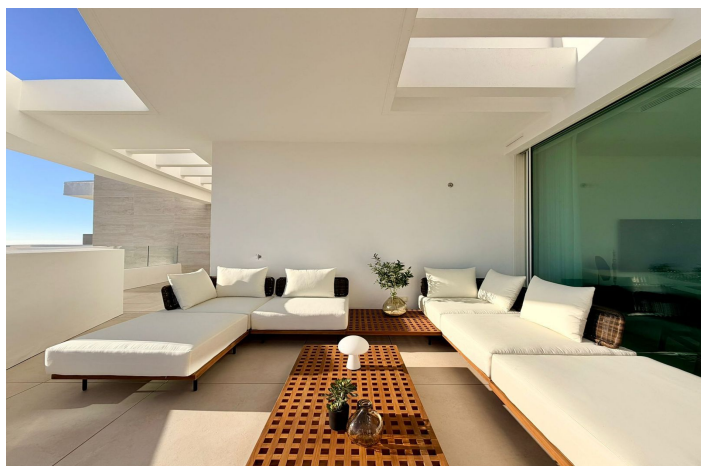
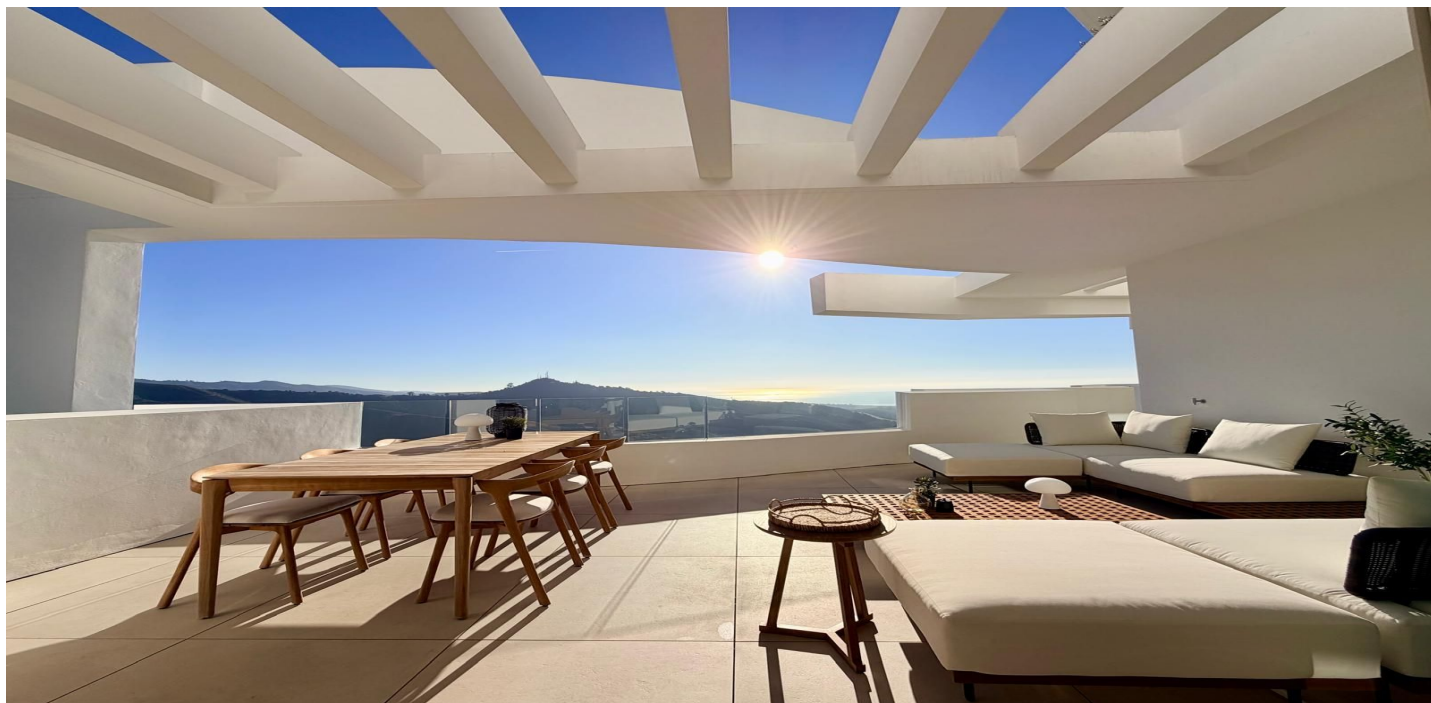




Middle Floor Apartment for sale in Marbella Town, Marbella

1.250.000 €

Reference: R5283109 Bedrooms: 3 Bathrooms: 2 Build Size: 160m² Terrace: 40m²





Costa del Sol, Marbella Town

First-Floor Apartment with Panoramic Views in Palo Alto, Ojén Located within the prestigious gated community of Palo Alto, Jacarandas this elegant south/southeast-facing first-floor apartment enjoys stunning sea, mountain, and panoramic views in a peaceful elevated setting just above Marbella. The apartment offers a well-designed layout with bright open-plan living and dining areas that flow seamlessly into a fully equipped contemporary kitchen. Large windows open directly onto 40 m² of private terraces, creating a strong connection between indoor and outdoor living and providing an ideal space for relaxation or entertaining while enjoying the surrounding scenery. The property features three spacious bedrooms, all designed for comfort and functionality. In total, there are two modern bathrooms and a guest toilet, finished to a high standard with quality materials. A separate laundry room with additional storage enhances everyday convenience. Year-round comfort is ensured with underfloor heating and air conditioning throughout. The apartment is presented in excellent condition. Luxury Italian designer furniture and finishes can be included by separate agreement, allowing flexibility for the future owner. The price includes one private parking space in garage and a storage room. Residents of Palo Alto benefit from an exceptional lifestyle, with access to a wellness centre featuring a gym, sauna, and indoor heated pool, as well as a tennis court, on-site restaurant, and exclusive Owners Club. The community is secured with 24-hour security and surrounded by beautifully landscaped communal areas. This property is ideal for those seeking a tranquil yet well-connected home, with easy access to Marbella, beaches, golf courses, international schools, and all essential services.



Features:

Caratteristiche

Terrazza coperta

Ascensore

Terrazza privata

Ripostiglio

Bagno privato

Armadi a muro

Wifi

Palestra

Sauna

Tennis paddle

Campo da tennis

Jacuzzi

Barbecue

Accesso per le persone con mobilità ridotta

Viste

Mare

Montagna

Giardino

Piscina

Foresta

Piscina

Condominiale

Interna

Giardino

Condominiale

Utility

Elettricità

Orientamento

Sud

Sud -est

Collocamento

Vicino al golf

Zona urbana

Vicino al mare

Vicino ai negozi

Vicino alla città

Vicino alle scuole

Vicino alla foresta

Vicino al porto

Mobilia

Opzionale

Sicurezza

Complesso residenziale privato

Sicurezza 24 ore

Categoria

Case di vacanza

Investimento

Lusso

Rivendita

Climate Control

Aria condizionata

Riscaldamento a pavimento

Condizione

Eccellente

Nuove costruzioni

Cucina

Completamente arredata

Parcheggio

Garage