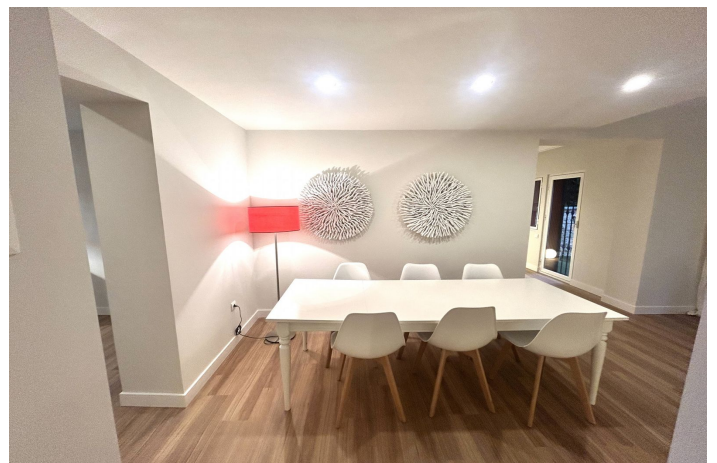




Semi-Detached House for sale in Atalaya, Estepona

690.000 €

Reference: R5251573 Bedrooms: 4 Bathrooms: 3 Plot Size: 250m² Build Size: 285m² Terrace: 100m²





Costa del Sol, Atalaya

Large house ready to go in to live; From the beautiful front garden and through a stone staircase you access the entrance of the house open to a large living room with fireplace that has plenty of light all day as it is south orientation; on this floor there is also a separate kitchen, with small dining room, that gives the access garden, a guest toilet and a small extra room perfect for office, or for room to play, from which you pass to the private garage covered with The house is the Lomas de Monte Biarritz one of the most beautiful and well-kept urbanizations in the area; On the first floor there are 3 bedrooms, the master with en-suite bathroom, closet area and access to two terraces one of them huge solarium type; , the other two rooms also have fitted wardrobes and share another bathroom; the house has a more attic floor where a small room is located with a large terrace that enjoys wide views. The house has recently been completely renovated by architects; so this list to enter to live and by its orientation, has a lot of light all day; the community is very well maintained and managed. It has large and beautiful gardens and 2 swimming pools, one of adults and another of children; It is a perfect house for families with children, since there is a lot of atmosphere; and it is perfect for living all year round; since it is next to all services: The Guadalmina Shopping Centre also the Atalaya and San José schools in Guadalmina are next to it; Call us and we teach you!!



Features:

Caratteristiche

Terrazza coperta
Vicino ai mezzi di trasporto
Terrazza privata
Pavimenti in marmo
Doppio vetro
Armadi a muro
Solarium
Sala giochi
Ripostiglio
Pavimenti in legno

Viste

Panoramica
Campagna
Giardino
Piscina

Piscina

Condominiale

Giardino

Privato

Valutazione energetica

C

Orientamento

Sud

Collocamento

Vicino al golf
Vicino al porto
Vicino al mare
Vicino ai negozi
Vicino alla città
Vicino alle scuole

Mobilia

Non arredato

Sicurezza

Complesso residenziale privato
Persiane elettriche

Valutazione delle emissioni di CO2

C

Climate Control

Camino

Condizione

Buona
Eccellente
Recentemente rinnovato
Nuove costruzioni

Cucina

Completamente attrezzata

Parcheggio

Privato