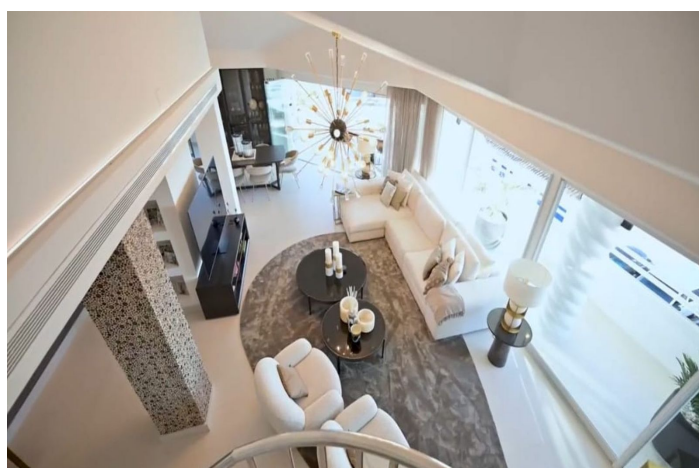




## Penthouse Duplex for sale in Benalmadena Costa, Benalmádena

**1,975,000 €**

Reference: R5211703    Bedrooms: 4    Bathrooms: 4    Build Size: 313m<sup>2</sup>    Terrace: 59m<sup>2</sup>





---

## Costa del Sol, Benalmadena Costa

For sale this front line luxurious four-bedroom duplex penthouse in the famous Puerto Marina in Benalmádena Costa. This stunning penthouse has been reformed to the highest standard mixing modern with contemporary living, it is one of the best penthouses front line Port that you will ever get the chance to buy. Entering the property, you have a spacious hallway that leads into a living space. On this floor natural light flows into the property effortlessly and you will also find the sleek marble kitchen and breakfast bar, accompanied by an open plan dining space. This level also has spacious terraces where you and your family can sit and enjoy the tranquillity of this amazing property, with the most amazing open views looking over the Marina and to the sea. The property 4 double bedrooms, 3 with their own ensuite bathrooms, giving the privacy and comfort for everybody. The bathrooms are designed and have modern finishes. The master suite is a great on its own, with all the space and a walk-in closet that is sure to please design and style lovers. This corner penthouse is very light, thanks to its corner location and southwest orientation. You will enjoy natural light throughout the day, especially in the living room, where you can relax and have the spectacular views of the sea. Imagine enjoying picturesque sunsets from here! One of the specialties of this property is its private solarium which is accessed from the living room, via a spiral staircase which takes you up to the private roof terrace, which is amazing for its views and the size of it. Here you can enjoy the sun all day long, relax in the chill-out area and take advantage of the outdoor kitchen to prepare delicious meals al fresco. This space is perfect for socializing with friends and family while taking in the stunning panoramic views. Includes part of the furniture and garage space, it has everything to start enjoying now! The location in Puerto Marina, Benalmádena, adds even more value to this magnificent home. As you will find here haute cuisine restaurants, luxury boutiques and entertainment options. Welcome to book your viewings with us!



## Features:

### Features

Covered Terrace  
Lift  
Near Transport  
Private Terrace  
Ensuite Bathroom  
Marble Flooring  
Double Glazing  
Fitted Wardrobes  
Solarium  
WiFi  
Jacuzzi  
Fiber Optic  
Access for people with reduced mobility

### Views

Sea  
Panoramic  
Port

### Pool

Communal

### Garden

Private

### Utilities

Electricity  
Drinkable Water

### Orientation

East  
South  
West  
South East  
South West

### Setting

Close To Golf  
Close To Port  
Close To Sea  
Close To Town  
Port  
Marina  
Close To Marina  
Front Line Beach Complex

### Furniture

Part Furnished

### Security

Gated Complex  
Entry Phone

### Category

Luxury  
Resale

### Climate Control

Air Conditioning  
Hot A/C

### Condition

Excellent  
Recently Renovated

### Kitchen

Fully Fitted

### Parking

Underground  
Garage