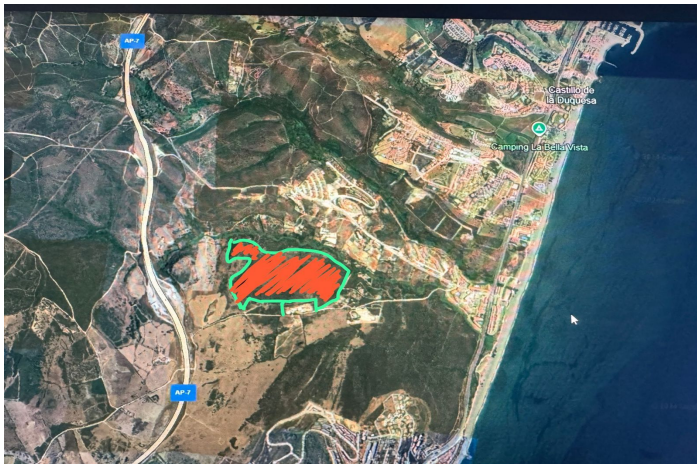
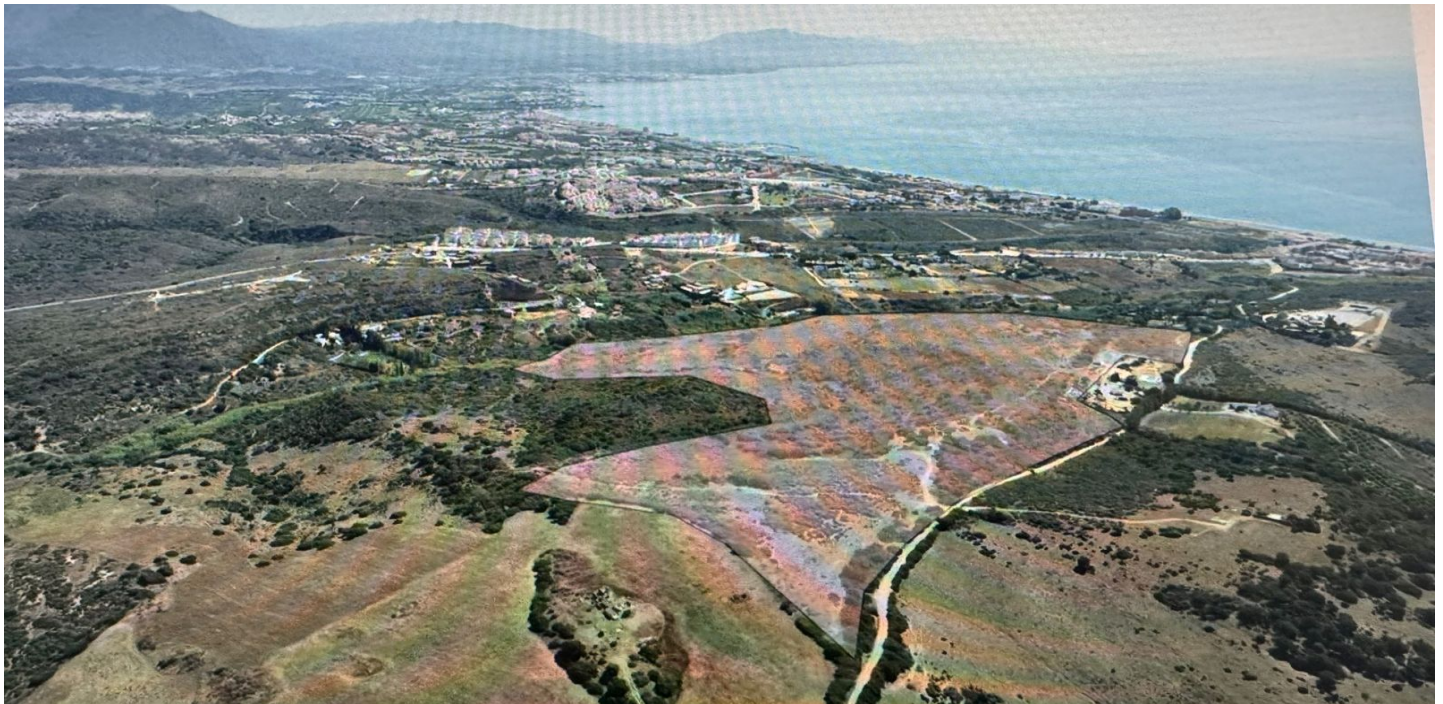




## Land for sale in Manilva, Manilva

**10,200,000 €**

Reference: R4870576 Plot Size: 336,431m<sup>2</sup>





## Costa del Sol, Manilva

An exceptional estate for sale in Martagina, Manilva, located just minutes from Sotogrande. This large plot boasts a prime location with sweeping views of the Mediterranean Sea. Set on a spacious plot, this property is ideally suited for large-scale educational, healthcare, sports, leisure, and other developments—an outstanding investment opportunity in a highly desirable area brimming with potential. Strategically positioned near Sotogrande, this estate offers easy access to major routes and amenities while providing a tranquil, scenic setting. Its proximity to the Mediterranean ensures stunning sea views and a serene natural backdrop, blending convenience with relaxation. Perfect for Large-Scale Projects: Spanning 34.2 hectares, this expansive and adaptable property is perfect for a variety of projects. From educational institutions to healthcare complexes, premier sports facilities, or leisure and entertainment hubs, the opportunities are vast. Its prime location and breathtaking views make it an ideal foundation for visionary developments.