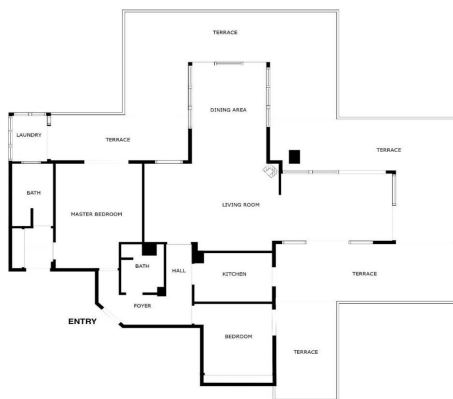




Penthouse for sale in Benalmadena Costa, Benalmádena

610.000 €

Reference: R4777045 Bedrooms: 2 Bathrooms: 2 Plot Size: 272m² Build Size: 135m² Terrace: 137m²



SIZES ARE APPROXIMATE, ACTUAL MAY VARY.





Costa del Sol, Benalmadena Costa

Welcome to your dream home in the prestigious area of Higueron! This exquisite 2-bedroom penthouse offers unparalleled luxury and comfort with breathtaking sea views and a host of modern amenities. The Reserva del Higuerón Housing Estate is an idyllic place offering the best views, an architectural style that adapts to the land's natural features and a wide variety of services. The entire area is granted safety, exclusiveness and wellbeing, as well as the satisfaction of the highest demands with every development. Key Features: Prime Location: Situated in the sought after area of Higueron, you are conveniently close to high-end restaurants, well equipped fitness center, tennis court and top-rated schools and the Higueron 5 stars hotel. Enjoy unparalleled privacy in the community's highest penthouse, offering complete peace with no neighbouring units overlooking your space. Panoramic Sea Views: Revel in the serene and picturesque sea views right from your home, providing a constant reminder of the beauty that surrounds you. Tropical Gardens: The complex features beautifully landscaped tropical gardens and 2 pools, offering a peaceful and lush environment to unwind and enjoy nature. Modern Amenities: Benefit from the exclusive amenities within the complex, including 2 swimming pools, spa, tennis courts, and a well-equipped fitness center. Additional Features: Fireplace Two spacious bedrooms with direct access to the terrace EASY Possibility of converting it into a 3 bedroom 5 electric awnings Higuerón bus that takes you to the beach in Carvajal and shopping area including restaurants, pharmacy and Carrefour supermarket Laundry room Secure underground parking and storage room. Only 20 minutes away from the airport! 135m2 Built + 138m2 Terrace



Features:

Caratteristiche

Ascensore
Vicino ai mezzi di trasporto
Terrazza privata
TV satellitare
Ripostiglio
Bagno privato
Pavimenti in marmo
Doppio vetro
Armadi a muro
Wifi
Autobus di cortesia
Seminterrato

Viste

Mare
Montagna
Panoramica
Giardino

Piscina

Condominiale
Piscina per bambini

Giardino

Condominiale

Utility

Elettricità
Acqua potabile

Valutazione delle emissioni di CO2

E

Orientamento

Est
Sud
Ovest

Collocamento

Vicino alla spiaggia
Vicino al golf
Vicino al porto
Zona urbana
Vicino al mare
Vicino alla città
Vicino alle scuole

Mobili

Parzialmente arredato

Sicurezza

Complesso residenziale privato
Citofono

Categoria

Case di vacanza
Investimento
Lusso

Climate Control

Aria condizionata
Freddo a/c
Caldo a/c
Camino
Riscaldamento a pavimento nei bagni

Condizione

Buona

Cucina

Completamente arredata

Parcheggio

Sotterraneo
Garage
Privato
Coperto

Valutazione energetica

E