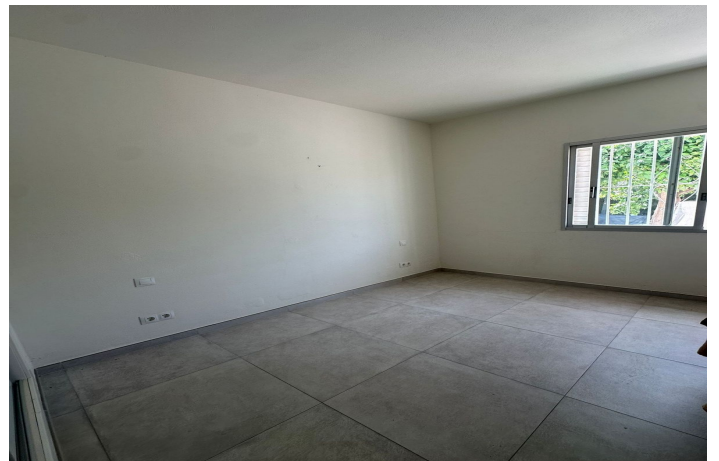




## Ground Floor Apartment for sale in Marbella Town, Marbella

590.000 €

Reference: R5141662   Bedrooms: 2   Bathrooms: 2   Build Size: 109m<sup>2</sup>   Terrace: 30m<sup>2</sup>





---

## Costa del Sol, Nueva Andalucía

Stunning Ground Floor Apartment in Nueva Andalucía's Prestigious Aloha Golf Valley Discover your dream home in the heart of Marbella's exclusive Nueva Andalucía Golf Valley! This beautiful 109 m<sup>2</sup> ground floor apartment in the sought-after Aloha area offers a perfect blend of luxury, comfort, and convenience. With breathtaking views of La Concha beach and lush gardens, this property is a rare gem for those seeking an elevated lifestyle. Property Highlights: Spacious & Modern Layout: 2 bedrooms, 2 bathrooms, a fully equipped kitchen, and a dedicated laundry room—all on one floor for seamless living. Private Garden: Enjoy your own outdoor oasis with stunning views of La Concha mountain and the sea. Accessibility: No stairs, ensuring easy access for all. Private Parking: Exclusive parking within the secure urbanisation. Premium Community Amenities: Relax or stay active with access to a swimming pool, tennis courts, paddle tennis court, and a state-of-the-art gym. Why Choose Aloha? Nestled in the prestigious Aloha Golf Valley, this location combines tranquillity with vibrant sophistication. Just minutes from Puerto Banús, you'll enjoy: World-class golf at Aloha Golf Club, Las Brisas, and Los Naranjos. A lively social scene with high-end restaurants, chic cafés, boutiques, and exclusive clubs. Proximity to international schools and top-tier sports facilities, perfect for families. Unrivalled views of the sea and La Concha mountain, blending luxury with natural beauty Whether you're seeking a serene retreat, a family-friendly home, or a smart investment, this apartment in Aloha offers it all. Don't miss the chance to own a slice of Marbella's finest lifestyle! Contact us today to schedule a viewing and make this stunning apartment yours!



## Features:

### Caratteristiche

Vicino ai mezzi di trasporto

Terrazza privata

Bagno privato

Pavimenti in marmo

Doppio vetro

Armadi a muro

Palestra

Tennis paddle

Campo da tennis

Ripostiglio

Fibra ottica

Accesso per le persone con mobilità ridotta

### Viste

Montagna

Giardino

### Piscina

Condominiale

### Giardino

Condominiale

Privato

Paesaggistico

### Categoria

Case di vacanza

Investimento

Golf

### Orientamento

Est

### Collocamento

Vicino al golf

Zona urbana

Vicino al mare

Vicino ai negozi

Vicino alle scuole

Città

### Mobili

Non arredato

### Sicurezza

Complesso residenziale privato

Sicurezza 24 ore

Sistema di allarme

Citofono

### Climate Control

Camino

### Condizione

Buona

### Cucina

Completamente arredata

### Parcheggio

Privato

Coperto