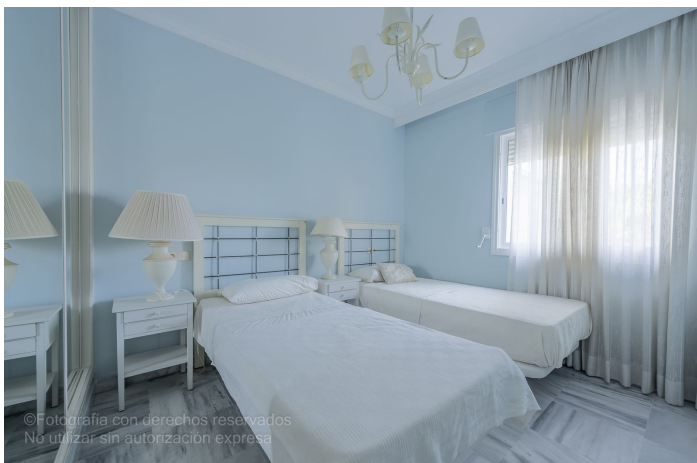




Penthouse for sale in Puerto Banús, Marbella

525.000 €

Reference: R5131972 Bedrooms: 2 Bathrooms: 2 Build Size: 80m² Terrace: 70m²




Costa del Sol, Puerto Banús

Bright two-bedroom, two-bathroom penthouse located in La Dama de Noche, one of the most exclusive and sought-after residential complexes in the area. Just one kilometre from the beach and Puerto Banús, it offers the tranquillity of a residential setting along with the convenience of having all services close at hand. Situated on the fourth floor with lift access, it features 81 m² of interior space laid out in a practical and functional way, along with an impressive 77 m² southeast-facing terrace, perfect for enjoying the sun, relaxing outdoors, or spending time with family and friends, all while taking in the pleasant open mountain views. Inside, the marble floors and bathrooms, generous fitted wardrobes, and a spacious, bright living room create a warm and comfortable atmosphere for everyday living. The property includes a parking space and is set within a community offering two swimming pools, extensive landscaped gardens, a children's play area, 24-hour security, and concierge service. Its location provides excellent connections to Marbella, San Pedro, and Nueva Andalucía, and is surrounded by shops, restaurants, and sports facilities, making it an ideal choice both as a permanent residence or an investment., Marbella, Costa del Sol. Built 0 m². Setting : Commercial Area, Close To Golf, Close To Port, Close To Shops, Close To Sea, Close To Schools, Marina, Close To Marina, Urbanisation. Orientation : East. Condition : Good. Pool : Communal. Views : Mountain, Panoramic. Features : Lift, Fitted Wardrobes, Near Transport, Private Terrace, Paddle Tennis, Tennis Court, Ensuite Bathroom, Marble Flooring, Restaurant On Site, Near Church. Furniture : Optional. Kitchen : Partially Fitted. Garden : Communal. Security : Gated Complex, Entry Phone, 24 Hour Security. Parking : Underground, Private. Category : Resale.



Features:

Caratteristiche

Ascensore
Vicino ai mezzi di trasporto
Terrazza privata
Bagno privato
Pavimenti in marmo
Armadi a muro
Tennis paddle
Campo da tennis
Ristorante in loco
Vicino alla chiesa

Collocamento

Area commerciale
Vicino al porto
Zona urbana
Vicino al mare
Vicino ai negozi
Vicino alle scuole
Porto
Vicino al porto

Mobilia

Opzionale

Sicurezza

Complesso residenziale privato
Sicurezza 24 ore
Citofono

Orientamento

Est

Condizione

Buona

Cucina

Completamente attrezzata

Parcheggio

Sotterraneo
Privato

Viste

Montagna
Panoramica

Piscina

Condominiale

Giardino

Condominiale

Categoria

Rivendita