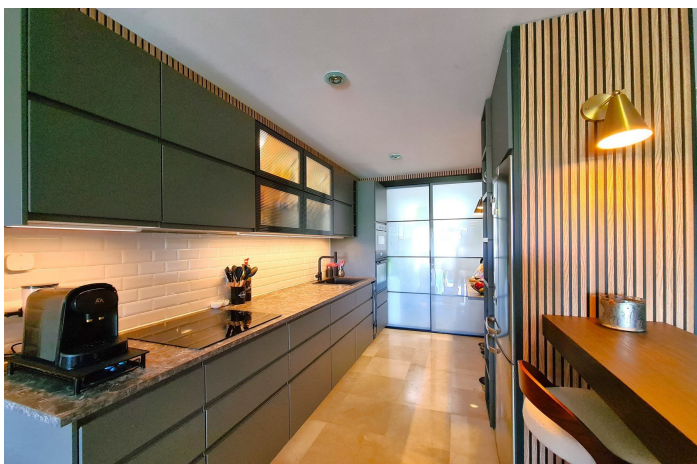




Ground Floor Apartment for sale in Benahavís, Benahavís

675.000 €

Reference: R5034646 Bedrooms: 3 Bathrooms: 2 Plot Size: 70m² Build Size: 110m² Terrace: 65m²





Costa del Sol, Benahavís

FANTASTIC 3-BEDROOM GROUND FLOOR APARTMENT WITH LARGE GARDEN Located in a quiet and safe residential area, surrounded by nature, this apartment is very well connected to the AP7 motorway, which connects the entire Costa del Sol. Just a 5-minute drive from Guadalmina Alta and the prestigious Atalaya School, with the beach, supermarkets, pharmacies, and restaurants 10 minutes away. The property was completely renovated in 2025, so everything is as good as new. Upon entering the apartment, we find an entrance hall leading to the spacious living-dining room with beautiful views of the garden, which also has access to a large, partially covered terrace. It also has a spacious, brand-new, modern kitchen equipped with high-end appliances and access to the separate laundry room. The property's bedrooms and bathrooms are distributed through a corridor. The spacious master bedroom features a large built-in wardrobe with access to and views of the terrace/garden. It also has a fully renovated en-suite bathroom in a contemporary style, equipped with a shower and a window that provides abundant natural light and ventilation. The two single bedrooms have built-in wardrobes and are bright. One of them has access to the garden. The second bathroom is located at the entrance to the hallway, connecting to the common areas of the house (living/dining/kitchen) and is located next to the two single bedrooms. This full bathroom also has a shower. The property enjoys the convenience of having a private parking space, in addition to enjoying the community gardens and saltwater pools. **WE RECOMMEND A VIEWING!!**



Features:

Caratteristiche

Terrazza coperta
Ascensore
Terrazza privata
Bagno privato
Pavimenti in marmo
Doppio vetro
Armadi a muro
Solarium
Wifi
Ripostiglio

Viste

Mare
Montagna
Panoramica
Campagna
Giardino
Golf

Piscina

Condominiale
Piscina per bambini

Giardino

Condominiale
Privato

Utility

Elettricità
Acqua potabile
Telefono
Gas

Orientamento

Sud

Collocamento

Vicino al golf
Zona urbana
Vicino ai negozi
Vicino alla città
Vicino alle scuole
Vicino al porto

Mobilia

Opzionale

Sicurezza

Complesso residenziale privato
Sistema di allarme
Citofono

Categoria

Casa di vacanza
Investimento
Golf
Lusso
Rivendita

Climate Control

Aria condizionata
Freddo a/c
Caldo a/c

Condizione

Eccellente
Recentemente rinnovato

Cucina

Completamente arredata

Parcheggio

Sotterraneo
Garage
Privato