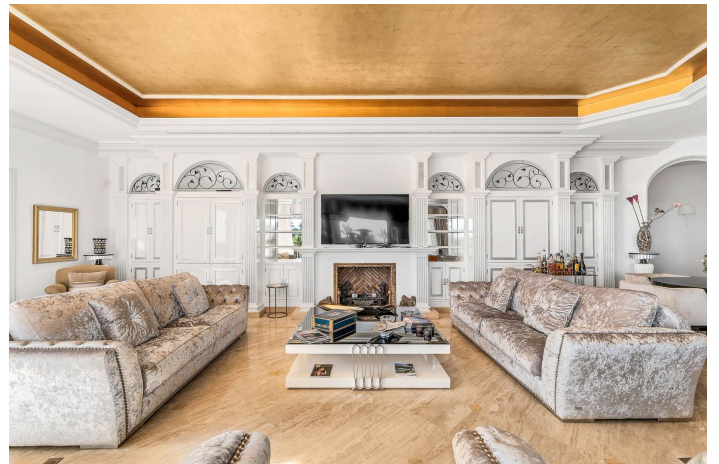




Detached Villa for sale in Benahavís, Benahavís

13.950.000 €

Reference: R5065684 Bedrooms: 16 Bathrooms: 17 Plot Size: 7.100m² Build Size: 1.837m² Terrace: 500m²





Costa del Sol, Benahavís

Luxury Mediterranean palace located in El Paraíso Alto, Benahavís, surrounded by some of the best golf courses on the Costa del Sol. The main house has three floors and a separate entrance lower level. The hall of the main floor takes you directly to an enormous beautiful living room that connected all around with an amazing terrace that leads you to the swimming pool. The living room, dining room area and relaxation area with a bar are all in the same open space, the kitchen is separated but also has access to the same terrace that surrounds this part. One bedroom with a private bathroom and dressing room is located at this floor and has an opening to the lovely terrace as well. The top floor of this main house has four bedrooms. Two master bedroom suites with private bathrooms and dressing areas. They all have private terraces from where you can enjoy the lovely garden and views of the mountain and sea. Lower level (with separate entrance): en-suite bedroom facing to the pool. Guesthouse: two bedrooms, two bathrooms, private dressing rooms and terraces. This side of the house is connected to the swimming pool shared with the main villa. The living and dining room area are actually situated at on the lower level. There is a separate dining room and living room plus a spa room. The top floor has the master bedroom with a huge bathroom, dressing room and chill out room. It also has a spacious terrace with great views. Annex: three staff apartments. The house is surrounded by lush, mature tropical gardens, a super sized private swimming pool with terracing and sun deck, private garage parking as well as driveway parking.



Features:

Caratteristiche

Terrazza coperta
Terrazza privata
Bagno privato
Pavimenti in marmo
Armadi a muro
Solarium
Ripostiglio
Seminterrato

Viste

Mare
Montagna
Giardino
Piscina

Giardino

Privato

Categoria

Lusso

Orientamento

Sud -est

Climate Control

Camino

Collocamento

Vicino alle scuole

Piscina

Privata

Parcheggio

Privato

Utility

Telefono