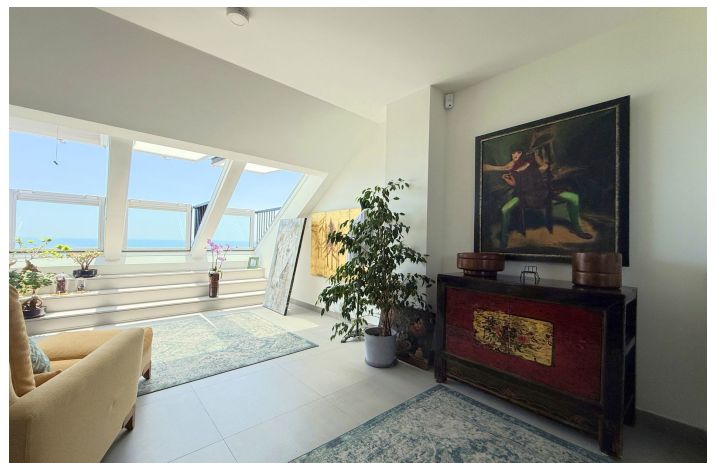




Penthouse for sale in La Duquesa, Manilva

365.000 €

Reference: R5061016 Bedrooms: 2 Bathrooms: 2 Build Size: 222m²





Costa del Sol, La Duquesa

PENTHOUSE WITH SEA AND LA DUQUESA PORT VIEWS IN MANILVA This bright south-facing penthouse in Manilva is an excellent opportunity for those seeking comfort, stunning views, and a prime location on the Costa del Sol. Featuring two bedrooms and two bathrooms, the property is in excellent condition, ready to move in and enjoy from day one. From its large windows, you can enjoy unobstructed views of the sea, La Duquesa Port, and the mountains, creating a space filled with natural light and tranquility. Its south-facing orientation ensures a pleasant temperature all year round, perfect for those who appreciate the warmth of the sun at home. The property is located just 4 minutes from La Duquesa Port, 15 minutes from Estepona, and 39 minutes from Gibraltar Airport, making daily life and getaways easy. The community offers a swimming pool and a fully equipped gym, perfect for relaxing or staying fit without the need to travel. It includes air conditioning, recessed lighting with dimmer controls, and an energy certification rated B, guaranteeing efficiency and comfort. The price also includes a parking space and storage room, adding value and functionality. As an added benefit, the property has a valid vacation rental license attached to it, making it an ideal option for both permanent residence and high-yield tourist rental investment. Perfect for those looking for a practical, well-connected home with the charm of living near the sea, without sacrificing the tranquility and wellbeing offered by this area of the Malaga coast.



Features:

Caratteristiche

Ascensore
Vicino ai mezzi di trasporto
TV satellitare
Ripostiglio
Bagno privato
Doppio vetro
Armadi a muro
Wifi
Palestra
Fibra ottica

Viste

Mare
Montagna
Panoramica
Campagna
Porto
Città
Strada

Piscina

Condominiale

Giardino

Condominiale

Utility

Elettricità
Acqua potabile
Telefono

Valutazione delle emissioni di CO2

B

Orientamento

Sud

Collocamento

Vicino al golf
Vicino al porto
Zona urbana
Vicino al mare
Vicino ai negozi
Vicino alla città
Vicino alle scuole
Vicino al porto

Mobili

Opzionale

Sicurezza

Complesso residenziale privato
Sistema di allarme
Persiane elettriche
Citofono

Categoria

Case di vacanza
Investimento
Golf
Rivendita
Contemporary

Climate Control

Aria condizionata
Riscaldamento centrale

Condizione

Eccellente

Cucina

Completamente arredata

Parcheggio

Sotterraneo
Garage
Privato
Coperto
Libero
Strada
Condominiale

Valutazione energetica

B