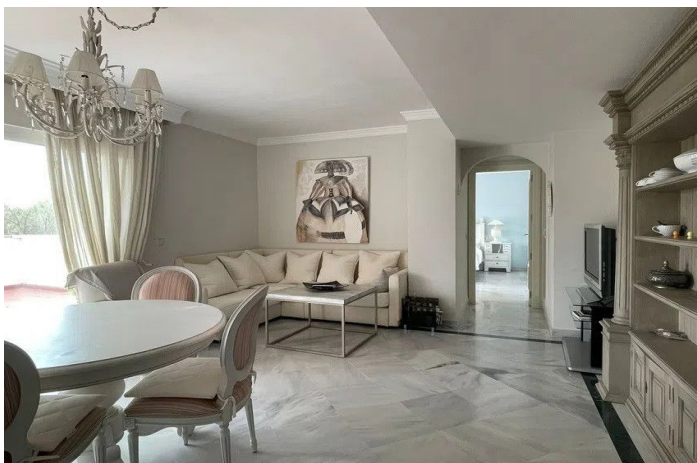




Penthouse for sale in Nueva Andalucía, Marbella

529.200 €

Reference: R5034439 Bedrooms: 2 Bathrooms: 2 Build Size: 150m² Terrace: 77m²





Costa del Sol, Nueva Andalucía

This property is a unique opportunity to acquire a spacious and well-situated penthouse in a renowned urbanization in Nueva Andalucía. The penthouse is surrounded by a variety of infrastructure and is just minutes from the famous Puerto Banus, its stores, and beaches. The property features two generously proportioned bedrooms, each complete with fitted closets and optimal lighting. The property's finishes are of the highest quality for the comfort of residents. The penthouse is equipped with two full bathrooms, each featuring a shower, bathtub, and optimal lighting and ventilation. Moreover, the living room is spacious and comfortable, and it receives natural light almost all day. The kitchen is a separate, modern space that is fully furnished and has access to the terrace. It is important to highlight the marble finishes in bathrooms and floors, which give the property a feeling of elegance, freshness, and spaciousness. The property's unique selling point is its 77 square meter L-shaped terrace, which faces south and east, offering sweeping views of La Concha. This ample space provides an ideal setting for relaxation, rest, or to share experiences and good times with friends and family. The complex is equipped with two swimming pools available for communal use, expansive gardens, walkways, and sports courts. It is also protected by 24-hour security. A parking space is also included within the selling price.



Features:

Caratteristiche

Terrazza coperta

Ascensore

Vicino ai mezzi di trasporto

Terrazza privata

Bagno privato

Armadi a muro

Barbecue

Viste

Montagna

Panoramica

Giardino

Città

Strada

Piscina

Condominiale

Sicurezza

Complesso residenziale privato

Orientamento

Sud -est

Collocamento

Vicino al porto

Vicino al mare

Vicino ai negozi

Vicino alla città

Vicino alle scuole

Mobili

Parzialmente arredato

Parcheggio

Privato

Climate Control

Aria condizionata

Condizione

Eccellente

Giardino

Condominiale