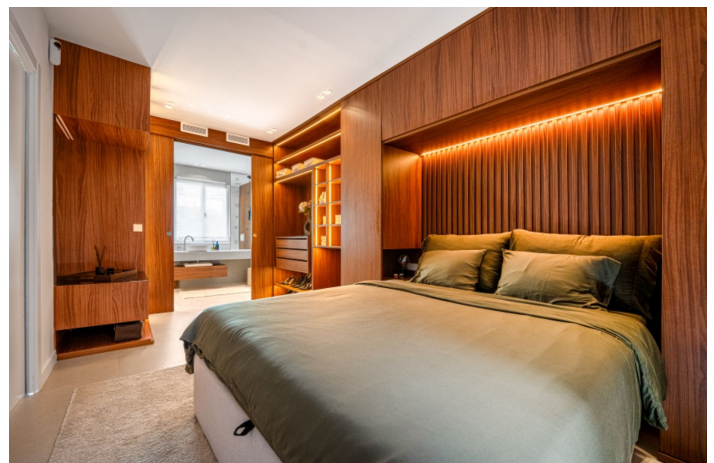




Middle Floor Apartment for sale in Benahavís, Benahavís

595.000 €

Reference: R5032477 Bedrooms: 2 Bathrooms: 3 Build Size: 110m² Terrace: 30m²





Costa del Sol, Benahavís

Presenting a truly magnificent top-floor apartment that has been the subject of an extensive and thoughtful transformation, resulting in a living space that artfully balances modern design with exceptional comfort and spectacular views. This is not just a home - it is an elevated lifestyle experience, where each detail has been fine-tuned to create a perfect fusion of elegance, warmth, and functionality. Set against a picturesque backdrop, the apartment features panoramic vistas that stretch endlessly across lush landscapes and azure skies, immersing you in a daily visual retreat.

The interior of this exquisite residence is a masterpiece of design and craftsmanship. Every room has been outfitted with beautifully handcrafted wooden furniture, lending a distinct artisanal character and timeless aesthetic to the home. The kitchen and utility areas are equipped with top-of-the-line appliances, chosen not just for performance but also to reflect a sleek, modern sensibility. Together, these elements elevate the space into one of both practical sophistication and visual harmony.

Outside, the expansive terrace has been transformed into a multi-functional extension of the interior, complete with a serene lounge and al fresco dining area. This outdoor haven is ideal for relaxing under the sun, entertaining guests, or simply enjoying peaceful mornings with a view.

Thoughtful planning and precise execution are evident in every square meter of this home. From the intelligently designed layout to the ambient lighting and premium finishes, each aspect has been curated to optimize both form and function. The apartment embraces a Scandinavian design ethos, characterized by minimalistic elegance, soft neutral tones, and natural textures that collectively instill a sense of calm and balance. This welcoming, uncluttered style creates an atmosphere where beauty and comfort coexist effortlessly, making the home equally suited for everyday living and stylish entertaining.

Located in the distinguished enclave of La Quinta, this apartment offers more than just a private sanctuary; it also delivers unparalleled access to some of the most coveted lifestyle amenities on the Costa del Sol. Set amidst rolling hills and pristine golf greens, the area is a paradise for those who enjoy active, outdoor pursuits. Whether you are an avid golfer, a nature lover, or someone who values tranquility, this setting delivers in abundance, with the majestic Sierra de las Nieves mountain range nearby provides a stunning visual backdrop.

The apartment spans a generous 110 square meters of thoughtfully designed living space, expertly configured to maximize comfort and utility. It features two beautifully appointed bedrooms and three elegant bathrooms, each offering a private retreat within the home. The main terrace, notable for its substantial size and dual orientation to the south and east, invites abundant natural light throughout the day while providing captivating views at every hour. Ideal for breakfast with the sunrise or dinner under the stars, the terrace is a focal point of the home's charm. For added convenience and security, the property also includes a designated parking space, ensuring ease of access at all times.

Positioned in one of the region's most desirable locations, this home offers close proximity to a wide range of essential services and leisure options. From fine dining and boutique shopping to vibrant beach clubs and miles of golden Mediterranean coastline, everything you need is just moments away. This top-floor gem is more than a place to live - it is a rare opportunity to inhabit a space that blends serene privacy, upscale luxury, and a deep connection to the stunning natural environment.

Surrounded by peaceful valleys and dramatic mountain peaks, this home is a hidden sanctuary where refined living and nature's beauty exist in perfect harmony.





Features:

Caratteristiche

Vicino ai mezzi di trasporto

Ripostiglio

Doppio vetro

Armadi a muro

Barbecue

Viste

Montagna

Campagna

Golf

Piscina

Condominiale

Parcheggio

Condominiale

Orientamento

Sud -est

Collocamento

Vicino al golf

Vicino ai negozi

Vicino alle scuole

In prima linea di Golf

Giardino

Condominiale

Categoria

Golf

Lusso

Climate Control

Aria condizionata

Riscaldamento centrale

Condizione

Eccellente

Recentemente rinnovato

Sicurezza

Complesso residenziale privato