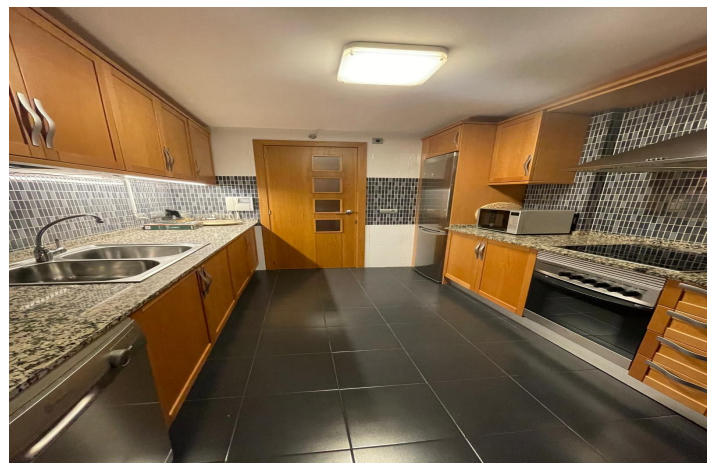
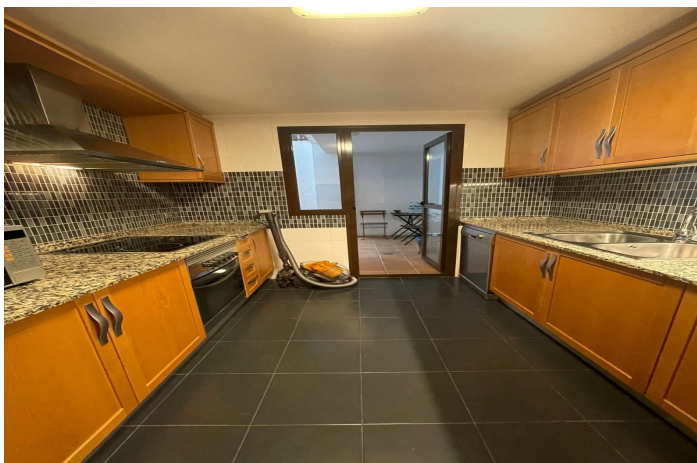




## Middle Floor Apartment for sale in Estepona, Estepona

**360.000 €**

Reference: R5026492   Bedrooms: 2   Bathrooms: 3   Build Size: 125m<sup>2</sup>   Terrace: 40m<sup>2</sup>





---

## Costa del Sol, Estepona

This exclusive apartment is located in the prestigious La Resina Golf resort, located in Estepona East, Malaga.

It is a modern and spacious apartment with a total built area of 125 m2, of which 85 m2 interior and a spacious private terrace of 40 m2.

The house has two comfortable bedrooms and two bathrooms, one en-suite.

Thanks to its excellent location near amenities, restaurants and golf courses, this apartment is ideal for those looking for comfort and convenience in a quiet and green environment.

The apartment is equipped with high quality amenities such as air conditioning, marble and stone floors, double glazing, shutters, and alarm system with armored door.

There is also a spacious living and dining room and a separate kitchen with a laundry room on an external patio.

The presence of a lift and a wheelchair accessible layout makes the apartment suitable for disabled persons.

Optionally the apartment can be furnished.

The outdoor areas are also impressive, with a large private terrace overlooking the mountains, the landscape and the beautiful communal gardens.

There is both a covered and an open part of the terrace, which makes it possible to enjoy the outdoor life all year round.

The common facilities include a large swimming pool, a children's pool, paddle grounds and a very well maintained communal garden with automatic irrigation system.

Finally, the apartment has a private parking as well as a basement.

The apartment is in excellent condition and is part of a closed and secure community, which guarantees extra peace and privacy.

Thanks to its location within the golf resort and its proximity to various amenities, this apartment offers a unique combination of luxury, safety and comfort on the Costa del Sol.



## Features:

### Caratteristiche

Terrazza coperta  
 Ascensore  
 Terrazza privata  
 TV satellitare  
 Ripostiglio  
 Bagno privato  
 Pavimenti in marmo  
 Doppio vetro  
 Armadi a muro  
 Wifi  
 Tennis paddle  
 Ripostiglio  
 Seminterrato  
 Fibra ottica

### Viste

Montagna  
 Campagna  
 Giardino

### Mobilia

Opzionale

### Parcheggio

Privato

### Valutazione energetica

E

### Orientamento

Sud

### Condizione

Eccellente

### Giardino

Condominiale

### Utility

Elettricità  
 Acqua potabile

### Valutazione delle emissioni di CO2

D

### Climate Control

Aria condizionata

### Piscina

Condominiale

### Sicurezza

Complesso residenziale privato  
 Sicurezza 24 ore  
 Sistema di allarme  
 Persiane elettriche

### Categoria

Golf