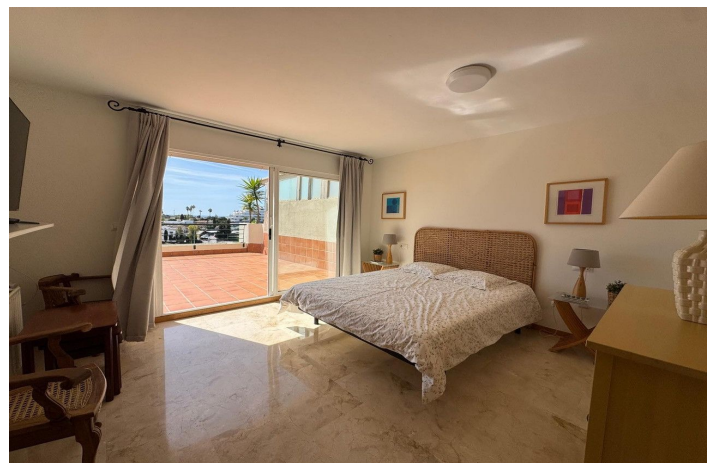




Penthouse Duplex for sale in Guadalmina Alta, Marbella

545.000 €

Reference: R5023582 Bedrooms: 3 Bathrooms: 3 Build Size: 157m² Terrace: 84m²





Costa del Sol, Guadalmina Alta

Located in the prestigious area of Guadalmina Alta, this stunning duplex penthouse offers spacious living with spectacular open views of the golf course and glimpses of the sea. Boasting 3 spacious double bedrooms and 3 bathrooms, the property features a grand master suite complete with a large ensuite bathroom and direct access to an expansive private terrace—perfect for enjoying the panoramic scenery.

The apartment boasts a thoughtfully designed layout that maximises space and natural light, with marble flooring throughout. This home includes a generous open-plan living and dining area that has direct access onto a covered terrace overlooking the golf course and communal pool. The fully fitted, generously sized kitchen is ideal for both everyday living and entertaining, while clever under-stairs storage enhances functionality.

On the upper level, one double bedroom provides peaceful internal views and direct open terrace access. The master suite opens onto a vast sun-drenched terrace with uninterrupted magnificent views. Additional features include gas central heating, air-conditioning, private underground parking, and 24-hour security.

South-east facing, the property is ideally positioned within walking distance of the Guadalmina Golf Club and the nearby commercial centre. Residents enjoy access to beautifully maintained gardens and multiple communal swimming pools, offering a truly privileged lifestyle on the Costa del Sol.



Features:

Caratteristiche

Terrazza coperta

Ascensore

Vicino ai mezzi di trasporto

Terrazza privata

Bagno privato

Pavimenti in marmo

Doppio vetro

Armadi a muro

Viste

Mare

Montagna

Panoramica

Giardino

Piscina

Golf

Piscina

Condominiale

Sicurezza

Complesso residenziale privato

Sicurezza 24 ore

Orientamento

Sud -est

Collocamento

Vicino al golf

Vicino ai negozi

Vicino alla città

Vicino alle scuole

In prima linea di Golf

Mobili

Opzionale

Parcheggio

Privato

Climate Control

Aria condizionata

Riscaldamento centrale

Condizione

Buona

Giardino

Condominiale

Categoria

Golf