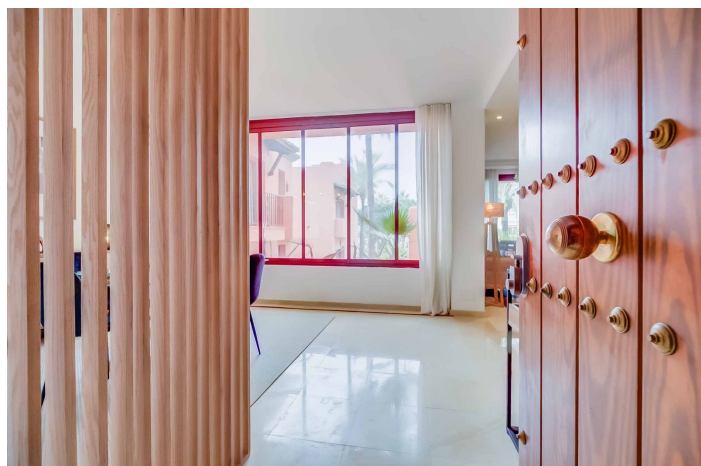
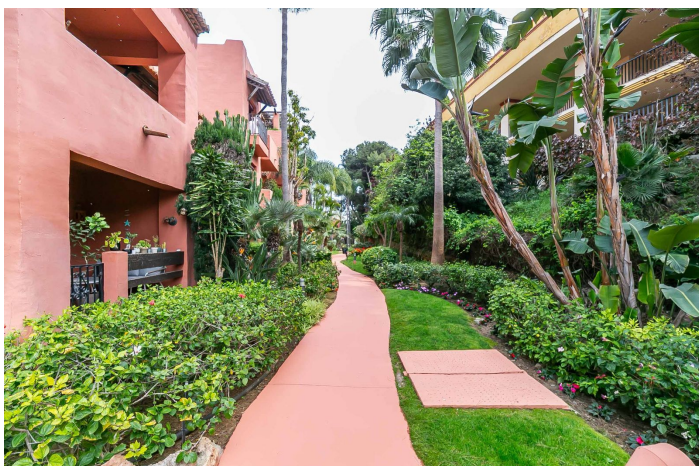
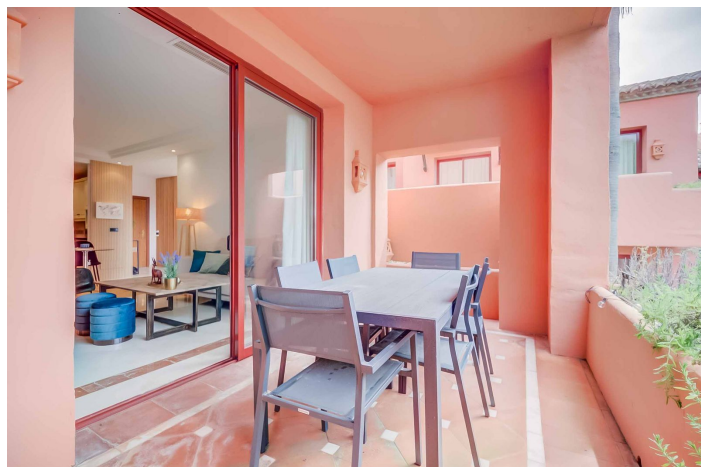




Middle Floor Apartment for sale in Marbella Town, Marbella

599,000 €

Reference: R5013571 Bedrooms: 3 Bathrooms: 2 Build Size: 122m² Terrace: 9m²





Costa del Sol, Marbella Town

Live the Luxury of Beachfront Living – Featured Apartment in Romana Playa, Marbella We present you with a unique opportunity to acquire one of the most attractive apartments in the prestigious Jardines de Don Carlos complex, located in the sought-after area of Elviria, Marbella. Boasting a privileged frontline beach location, this 122m² property perfectly blends spaciousness, elegance, and an exclusive atmosphere. The apartment features 3 double bedrooms, 2 bathrooms, a fully equipped kitchen, and high-quality finishes such as marble floors and well-crafted woodwork. Its private terrace invites you to enjoy the sun and sea breeze all year round, making it the perfect spot to relax or entertain. **HIGHLIGHTS:** -Best orientation and layout within the complex -Bright and spacious living areas -Air conditioning -Elevator -Gym, sauna, and impeccably maintained communal areas -Direct access to the beach from the complex -Communal pool surrounded by exotic gardens -Reinforced security door -Private storage room -Parking space included -Close to all amenities: supermarkets, schools, hospitals, restaurants, golf courses... Located in a gated and secure community, this apartment is not only ideal as a permanent residence but also represents an excellent investment opportunity in an area with high demand for holiday rentals. Exclusivity, location, and comfort... all in one property. Our agent fees are included in the sale price. The price does not include costs associated with the purchase, such as notary, registration, and taxes related to the transfer (ITP, VAT, AJD). Furniture is not included in the price.



Features:

Features

Covered Terrace
Lift
Near Transport
Private Terrace
Storage Room
Marble Flooring
Fitted Wardrobes
Gym
Utility Room

Setting

Commercial Area
Urbanisation
Close To Sea
Close To Schools

Furniture

Fully Furnished

Security

Gated Complex

CO2 Emission Rating

G

Orientation

South West

Condition

Good

Kitchen

Fully Fitted

Parking

Underground
Private

Views

Panoramic
Garden
Urban

Pool

Communal

Garden

Communal

Energy Rating

G