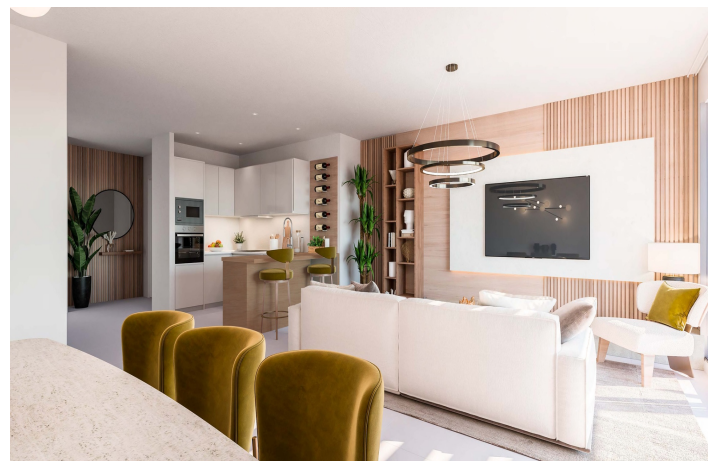
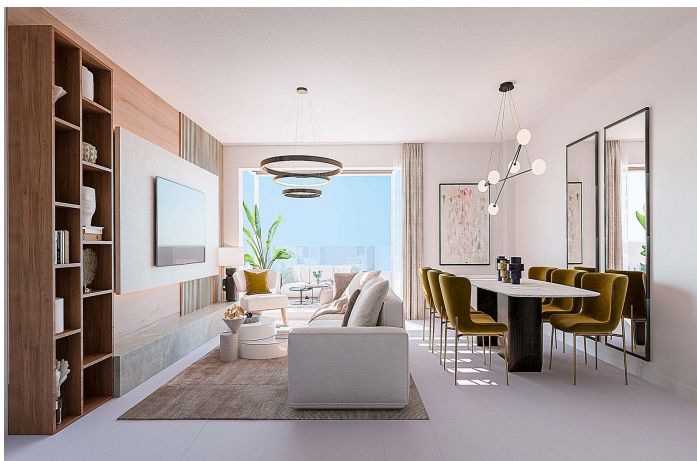




NEW RESIDENTIAL COMPLEX IN BENALMADENA

614,000 - 769,000 €

Reference: 715AMA Bedrooms: 3 - 3 Bathrooms: 2 - 2 Build Size: 111m² - 112m² Terrace: 76m² - 223m²





Costa del Sol, Benalmádena

New Sea View Residential Complex for Sale in Benalmádena – Elevated Living Between the Coast and Tranquility We are pleased to present this exclusive new residential project in Benalmádena, located within a prestigious private gated community set on a scenic hillside. Surrounded by nature and offering breathtaking panoramic views of the sea and coastline, this development is situated in one of the most sought-after areas of the Costa del Sol. Refined Architecture and Modern Living This elegant complex includes 49 modern apartments and 2 stylish townhouses. The staggered layout of the buildings ensures that each home benefits from abundant natural light and uninterrupted sea views. All units are thoughtfully designed to provide spacious, well-distributed interiors, flooded with natural light and perfectly connected to the outdoors. Large panoramic windows and open-plan living spaces create a warm and relaxing atmosphere, ideal for both year-round living and holiday getaways. A Prime Location on the Costa del Sol Benalmádena has long been a favorite destination on the Costa del Sol, popular with both residents and international visitors. This new development enjoys a privileged location that allows quick access to: • The renowned Benalmádena Marina, famous for its vibrant atmosphere, upscale restaurants, and nautical lifestyle • Seventeen beaches along nine kilometers of stunning coastline • The Torrequebrada Golf Course, just three kilometers away • International schools, top medical centers, Selwo Marina, and the lush Paloma Park • The town center, with its wide range of shops, restaurants, and cultural attractions • Málaga International Airport, just 15 minutes by car Why Choose This Development • Guaranteed sea views and elevated position • Secure, private community surrounded by nature • Contemporary homes with high-quality finishes and thoughtful design • Close proximity to beaches, golf, services, and all major Costa del Sol attractions • A smart property investment with strong growth potential and rental appeal This project offers a rare opportunity to own a modern sea view home in Benalmádena, with all the comforts you expect and a location that truly elevates your lifestyle. For more information, floor plans, or to arrange a private viewing, contact us today at +34 663 671 888. WhatsApp available. Estimated delivery: Q2_2025



Features:

Features

Covered Terrace
Lift
Private Terrace
Storage Room
Double Glazing
Fitted Wardrobes
Solarium
Gym

Views

Sea
Panoramic

Pool

Communal

Garden

Communal

Utilities

CO2 Emission Rating

In Progress

Orientation

South Facing
West Facing

Setting

Close To Golf
Close To Sea
Close To Shops
Close To Town
Close To Schools

Furniture

Security

Gated Complex

Category

Investment
New Development

Climate Control

Air Conditioning

Condition

Excellent

Kitchen

Furnished
Fully Fitted

Parking

Underground
Garage
Private
More Than One

Energy Rating

In Progress