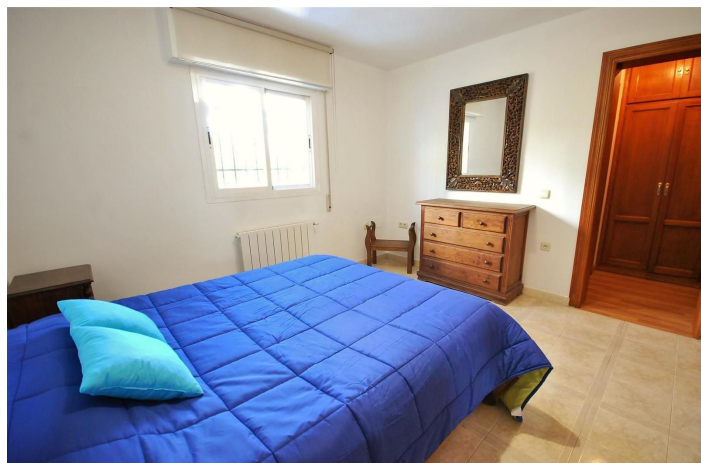




## Semi-Detached House for sale in Benahavís, Benahavís

360,000 €

Reference: R4201366 Bedrooms: 2 Bathrooms: 3 Plot Size: 181m<sup>2</sup> Build Size: 115m<sup>2</sup>





---

## Costa del Sol, Benahavís

Charming 2 bedroom semi-detached house in the breathtaking village of Benahavís, surrounded by mountains and set just above the Guadalmina River. The house is built on a 180m<sup>2</sup> plot giving it plenty of outside space including private parking and wrap around terrace. On the groundfloor we have a fully equipped, bright kitchen overlooking the south facing terrace, guest w.c. & a spacious living-dining room seperated by a few steps making the dining room feel more like an independent area. The living room exits onto a north facing terrace. Upstairs is the master suite with dressing room and another bedroom with dressing room and family bathroom. The upstairs terrace was converted into a possible third bedroom although it's entrance is through the second bedroom therefore becoming an ideal dressing room.

The property is within walking distance to all amenities including local shops, bars & restaurants, sports facilities, children's parks and more.

This property has huge potential and the options to renovate and extend are endless!

Semi-Detached House, Benahavís, Costa del Sol.

2 Bedrooms, 2.5 Bathrooms, Built 115 m<sup>2</sup>, Garden/Plot 181 m<sup>2</sup>.

Setting : Country, Village, Mountain Pueblo, Close To Golf, Close To Shops, Close To Schools, Close To Forest.

Orientation : North, South.

Condition : Good.

Climate Control : Central Heating.

Views : Mountain, Urban.

Features : Fitted Wardrobes, Private Terrace, Ensuite Bathroom, Double Glazing.

Furniture : Optional.

Kitchen : Fully Fitted.

Parking : Private.

Utilities : Electricity, Drinkable Water, Telephone.

Category : Resale.



## Features:

### Features

Private Terrace  
Ensuite Bathroom  
Double Glazing  
Fitted Wardrobes

### Views

Mountain  
Urban

### Furniture

Optional

### Utilities

Electricity  
Drinkable Water  
Telephone

### Orientation

North  
South

### Setting

Close To Golf  
Close To Shops  
Close To Schools  
Country  
Village  
Mountain Pueblo  
Close To Forest

### Kitchen

Fully Fitted

### Category

Resale

### Climate Control

Central Heating

### Condition

Renovation Required

### Parking

Private