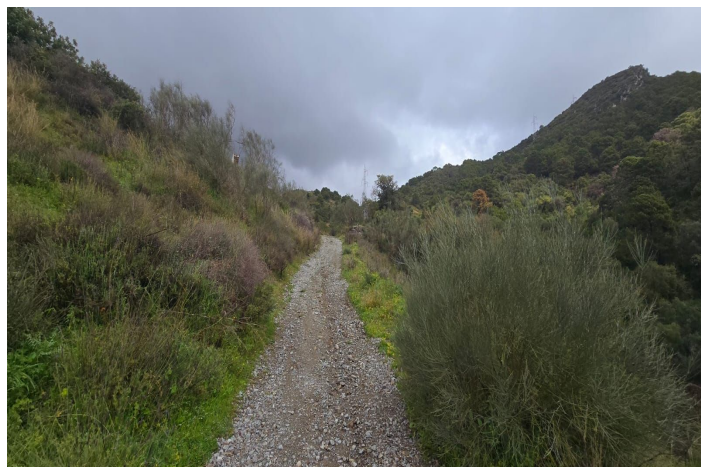




Land for sale in Benahavís, Benahavís

3,900,000 €

Reference: R4974601 Plot Size: 26,000m²





Costa del Sol, Benahavís

Nestled in the serene mountains of Benahavís, this exceptional rustic finca offers a unique opportunity for those looking to bring their dream building project to life. Boasting spectacular panoramic views of both the sea and the surrounding mountains, this expansive plot provides the perfect setting for a private retreat in nature. With planning permission in place, this property is ideal for those seeking to create a bespoke home in a peaceful and tranquil environment, away from the hustle and bustle yet within easy reach of key amenities. Just a 15-minute drive from renowned golf courses and only 30 minutes from Guadalmina, this location offers the perfect blend of seclusion and accessibility. Whether you're envisioning a luxury countryside estate or a sustainable rural retreat, this prime piece of land presents an outstanding investment opportunity in one of the most sought-after areas of the Costa del Sol.



Features:

Orientation

North
East
South
West
South East
North East
South West
North West

Condition

Excellent

Views

Sea
Mountain
Panoramic
Country
Garden
Forest

Category

Investment
Bargain
With Planning Permission

Setting

Close To Golf
Close To Town
Country
Mountain Pueblo
Close To Forest