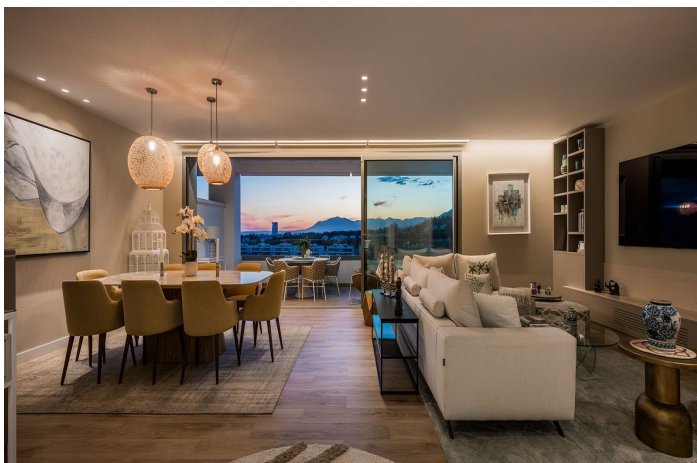




Penthouse for sale in Santa Clara, Marbella

2.600.000 €

Reference: R4346290 Bedrooms: 4 Bathrooms: 4 Build Size: 213m² Terrace: 173m²





Costa del Sol, Marbella Town

UNIQUE PENTHOUSE | SOUL SUNSET | SANTA CLARA GOLF | POOL | SEA, CITY & MOUNTAIN VIEWS The video must be seen! Welcome to your new home in Marbella - where comfort meets style in a stunning setting. This spacious 4-bedroom corner penthouse is all about relaxed luxury, tucked away in a beautiful green area surrounded by top golf courses and elegant homes. Located in the sought-after Soul Marbella community, you'll also enjoy access to 5-star hotel-style services that make everyday living feel like a holiday. Set over two levels, the 213 m² interior offers a bright and welcoming living space with a modern electric fireplace, a generous dining area, and a sleek, fully fitted kitchen with NEFF appliances. The southwest-facing bedrooms are filled with natural light, and the stylish bathrooms have been thoughtfully designed for both comfort and convenience. One of the best parts of this home is the outdoor space - and there's plenty of it. With 173 m² of sunny terraces, including a huge rooftop solarium, you'll have everything you need to soak up the Mediterranean lifestyle. Lounge by your private pool, unwind in the chill-out zones, or host family and friends in the outdoor kitchen with a built-in BBQ and dining area - all with fantastic sea and golf views. We focus on quality homes near Marbella's best beaches and golf courses, and with over 30 years of experience in construction and real estate, we're here to help you find the right property. If you'd like more details on this stunning home - including floor plans, specs, or amenities i Soul Marbella just reach out. We're always available and happy to help!



Features:

Caratteristiche

Terrazza coperta
Ascensore
Terrazza privata
Ripostiglio
Bagno privato
Doppio vetro
Reception 24 ore
Armadi a muro
Solarium
Palestra
Sauna
Ripostiglio
Pavimenti in legno
Barbecue
Domotica

Viste

Mare
Montagna
Panoramica
Giardino
Piscina
Golf

Piscina

Condominiale
Interna
Privata
Piscina per bambini

Giardino

Condominiale
Paesaggistico

Categoria

Golf
Lusso
Contemporary

Orientamento

Sud
Ovest
Sud -ovest

Collocamento

Vicino al golf
Zona urbana
Vicino alle scuole

Mobilia

Opzionale

Sicurezza

Complesso residenziale privato
Sicurezza 24 ore
Sistema di allarme
Persiane elettriche
Citofono

Climate Control

Aria condizionata
Freddo a/c
Caldo a/c
Camino
Riscaldamento a pavimento
Riscaldamento a pavimento nei bagni

Condizione

Eccellente

Cucina

Completamente arredata

Parcheggio

Sotterraneo
Garage
Più di uno