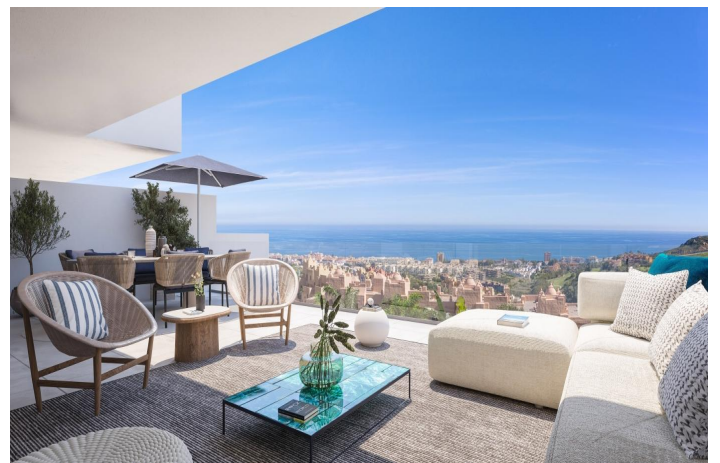
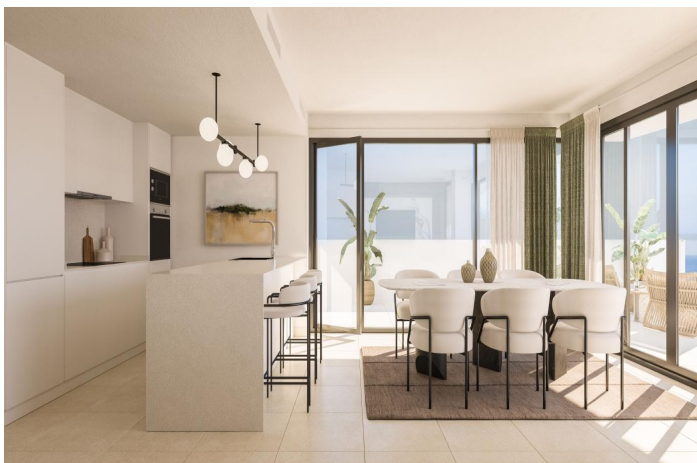




OFF-PLAN APARTMENTS IN MANILVA | ESTEPONA 398,000 - 683,000 €

Reference: 991AMA Bedrooms: 3 - 3 Bathrooms: 2 - 2 Build Size: 123m² - 138m² Terrace: 28m² - 99m²





Costa del Sol, La Duquesa

Luxury and Tranquility in Manilva, Costa del Sol: Off-Plan Apartment Project for Sale in Manilva | 2 – 3 Bedrooms | 1 – 2 Bathrooms

Exceptional residential project of 100 modern apartments in picturesque Manilva, located in the west of the Costa del Sol, close to the picturesque Port of La Duquesa. This luxury complex offers spacious 2- and 3-bedroom apartments, penthouses and ground floors, harmoniously organized in different buildings.

Elegant Features:

- Large terraces offering breathtaking views of the bay, perfect for enjoying the Mediterranean climate and relaxing atmosphere.
- Bright Interiors with large windows that allow lots of natural light, extending the rooms towards the external spaces.
- Garage and storage rooms included in the price for each unit, ensuring comfort and safety.

Exclusive Common Services:

- Large gardens, picnic areas, and a large swimming pool with salt chlorination, ideal for relaxation and well-being.
- Wellness area complete with spa, Turkish bath, jacuzzi, sauna and an internal gym, offering a perfect retreat for personal care.
- Co-working Area equipped with the most modern technologies, ideal for those who want to work in a stimulating environment overlooking the gardens.

Design and Quality: Every detail of the apartments has been meticulously designed to ensure excellence. From the sophisticated design to the high-quality finishes, each element has been chosen to satisfy the most demanding customers seeking a high standard of living.

Ideal Location:

- Proximity to Golf Courses and Nautical Sports, with 3 large marinas nearby: La Duquesa, Sotogrande and Puerto Banús.
- Perfect for outdoor living, thanks to the extraordinary climate and excellent sandy beaches.

Delivery date: Q1_2027

This project represents a unique opportunity for those looking for a house near the sea in a quiet area on the Costa del Sol. Contact us today to find out more about this new off-plan apartments in Manilva and organize your private viewing!



Features:

Features

Covered Terrace
Lift
Private Terrace
Storage Room
Double Glazing
Sicurezza 24H
Fitted Wardrobes
Solarium
Gym
Sauna

Views

Sea
Panoramic

Pool

Communal

Garden

Communal

Utilities

CO2 Emission Rating

In Progress

Orientation

South Facing

Setting

Close To Golf
Close To Port
Close To Sea
Close To Shops
Close To Town
Close To Schools

Furniture

Security

Gated Complex

Category

Investment
Luxury
New Development

Climate Control

Air Conditioning

Condition

Kitchen

Furnished
Fully Fitted

Parking

Underground
Private

Energy Rating

In Progress