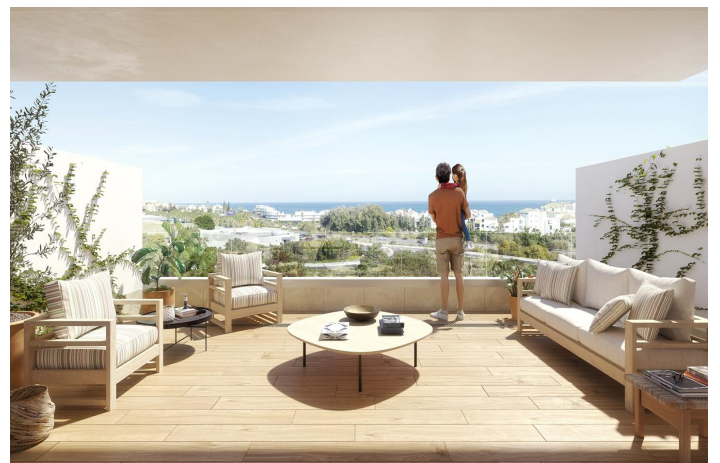
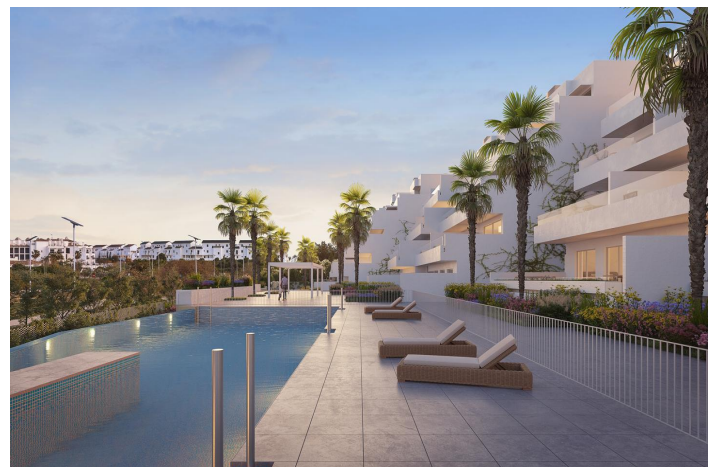




## PENTHOUSE DUPLEX IN ESTEPONA

406,000 - 670,000 €

Reference: 915AMA Bedrooms: 2 - 3 Bathrooms: 2 - 2 Build Size: 84m<sup>2</sup> - 119m<sup>2</sup> Terrace: 42m<sup>2</sup> - 145m<sup>2</sup>





---

## Costa del Sol, Estepona

Live in Comfort and Elegance in Estepona: Sea View Residential Complex with Apartments for Sale | 2 or 3 Bedrooms | 2 Bathrooms Discover the beauty of coastal living in this exclusive residential project of 54 apartments with spectacular sea views. The complex offers 2 and 3 bedroom apartments, duplexes and penthouses available with spectacular sea views and large terraces. The location of this complex is fantastic: 5 minutes by car or 15 minutes walk from the famous Estepona Port. All units are designed with fully equipped open plan kitchens with high quality appliances. Furthermore, a parking space and a storage room will be included in the price. All units are oriented towards the East, allowing you to enjoy constant brightness inside the house. Immerse yourself in the relaxing atmosphere of the Costa del Sol, spending your evenings on the fantastic terrace, admiring the suggestive surrounding landscape and the sea. The attention to detail is reflected in the simplicity of the lines and the choice of high quality materials, ensuring timeless elegance. The ground floor apartments offer a beautiful garden, while the penthouses have large terraces with spectacular sea views. Furthermore, this project offers a wide range of options to meet every need. The residential complex offers beautiful communal gardens, various outdoor swimming pools, sauna, gym and a social club available to residents. Don't miss the opportunity to visit this beautiful sea view residential complex in Estepona. Contact us today to book your private visit with us!



## Features:

### Features

Covered Terrace  
Lift  
Private Terrace  
Storage Room  
Double Glazing  
24 Hour Security Service  
Solarium

Gym

### Views

Sea  
Panoramic  
Garden  
Pool

### Kitchen

Furnished  
Fully Fitted

### Parking

Underground  
Private  
More Than One

### CO2 Emission Rating

In Progress

### Orientation

South Facing

### Setting

Close To Golf  
Close To Sea  
Close To Shops  
Close To Town  
Close To Schools

### Garden

Communal

### Category

Investment  
Luxury  
New Development

### Climate Control

Air Conditioning

### Pool

Communal

### Security

Gated Complex

### Energy Rating

In Progress