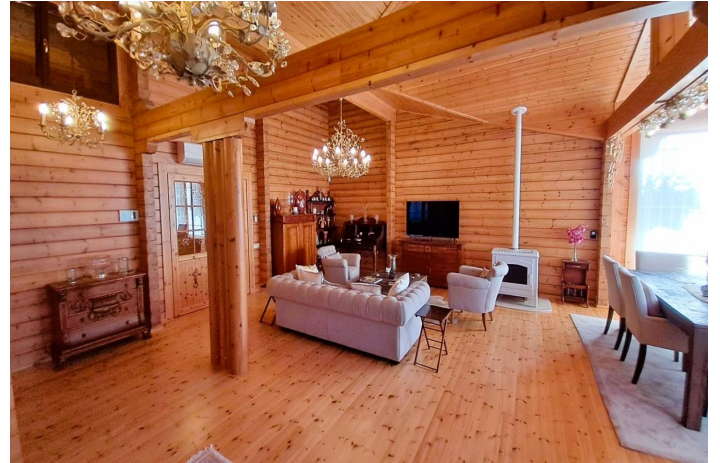




FINNISH WOODEN VILLA FOR SALE IN ELVIRIA | MARBELLA

995,000 €

Reference: 881AMA Bedrooms: 4 Bathrooms: 4 Plot Size: 1,299m² Build Size: 225m² Terrace: 123m²





Costa del Sol, Elviria

CHARMING FINNISH WOODEN VILLA FOR SALE IN ELVIRIA, MARBELLA – NATURE, COMFORT, AND COASTAL LIFESTYLE Located in the highly sought-after residential area of Elviria, east of Marbella, this beautiful Finnish-style wooden villa offers a unique blend of charm, sustainability, and Mediterranean living—just a few minutes' drive from the beach and all amenities of the Costa del Sol. **NATURAL WARMTH AND COMFORT ON A LARGE PLOT** Set on a generous 1,299 m² plot, the villa is distributed over two levels, designed to offer both privacy and comfort. The main floor features: • A master bedroom with en-suite bathroom • Two additional bedrooms and a shared bathroom • A spacious, light-filled living and dining area with high vaulted ceilings • Direct access to a large open terrace, ideal for sunbathing or enjoying al fresco moments On the lower level, there is a self-contained staff or guest apartment comprising: • One bedroom with en-suite bathroom • Kitchenette and cozy living room **OUTDOOR LIFESTYLE & RELAXATION** The beautifully landscaped garden is a private oasis, complete with: • Jacuzzi for year-round relaxation • Barbecue area perfect for entertaining • Mature fruit trees and space to create your own ecological vegetable garden The property also includes a spacious garage of 86.45 m² with capacity for 2 cars, plus exterior parking for 2 more vehicles. **A HOME EMBRACED BY NATURE, CLOSE TO EVERYTHING** This villa is the perfect choice for those seeking a peaceful family residence surrounded by greenery, without giving up the convenience of city life. It's just minutes from Marbella's finest beaches, international schools, golf courses, and the vibrant lifestyle of the Costa del Sol. Contact us for more information or to schedule a private viewing at +34 663671888, WhatsApp available.



Features:

Features

Covered Terrace
Private Terrace
Storage Room
Ensuite Bathroom
Jacuzzi

Views

Mountain
Garden

Pool

Garden

Private

Utilities

Photovoltaic solar panels

CO2 Emission Rating

B

Orientation

Setting

Close To Golf
Close To Sea
Close To Shops
Close To Schools

Furniture

Fully Furnished

Security

Alarm System
Electric Blinds

Category

Investment
Resale

Climate Control

Air Conditioning
Fireplace

Condition

Excellent

Kitchen

Furnished
Fully Fitted

Parking

Garage
Private

Energy Rating

C